

# **Environmental Protection (Darling Range Bauxite Mining Proposals) Exemption Order 2023**

**Alcoa Monthly Report  
Clause 10**

May 2024



# Monthly Reporting Dashboard – Page 1



## Section 1 – Clause 6 Drainage Incidents

Drainage Incidents		Turbidity Data		
Site	No. Events (May-24)	Site	No. Active Monitors	No. Events (May-24)
Huntly	0	Huntly	33	0
Willowdale	0	Willowdale	2	0
<b>Total</b>	<b>0</b>	<b>Total</b>	<b>35</b>	<b>0</b>

• WDL Turbidity monitors refers to Section 6 areas only.

## Section 2 – Clause 10 2(c) (i) Production and Exploration Summary

Production (HUN and WDL)	Month (May-24)	YTD (CY)	Limit	Status
Production Tonnes Huntly	1.8	9.3		
Production Tonnes Willowdale	0.7	4.0		
<b>Total Bauxite Production Tonnes</b>	<b>2.5</b>	<b>13.3</b>	<b>38 MT</b>	
Exploration	Month (May-24)	YTD (CY)	Limit	Status
<b>Total Exploration Holes</b>	<b>8,363</b>	<b>37,831</b>	<b>105,000</b>	

### Legend



Within Limit



Approaching Limit



Above Limit

## Section 3 Clause 10 2(c) (i) and Clause 10 2(c) (iii) Activities Summary and Forecast

Area	May 2024			June 2024			July 2024		
	*Cleared	Stabilised	Seeded	*Clearing	Stabilised	Seeded	*Clearing	Stabilised	Seeded
<b>Huntly</b>									
<b>Total HUN Mine Disturbance Footprint (ha)</b>	<b>0</b>	<b>2.0</b>	<b>92.5</b>	<b>45</b>	<b>0</b>	<b>0</b>	<b>45</b>	<b>0</b>	<b>0</b>
<b>Willowdale</b>									
<b>Total WDL mine disturbance footprint (ha)</b>	<b>0</b>	<b>0</b>	<b>0</b>	<b>0</b>	<b>0</b>	<b>0</b>	<b>0</b>	<b>0</b>	<b>0</b>

### Definitions

- Cleared – disturbance to native vegetation and other flora
- Stabilised– in relation to an area that has been disturbed, means carry out landscaping, ripping and other appropriate operations to prevent erosion of sediment, promote infiltration and manage surface water runoff
- Seeded – landform established and seeding complete

\* Clearing only considers completed hectares

# Monthly Reporting Dashboard – Page 2



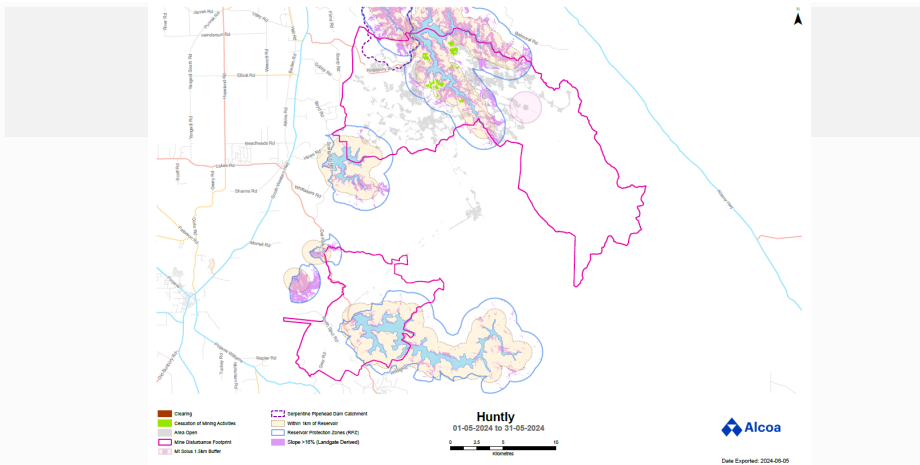
## Section 4 – Clause 2(c) (ii) Activities Ceased during the Period for Huntly

Area	May 2024		
	Haul Roads (a)	Infrastructure (b)	Mining
Within 1km Reservoir (ha)	1.5	0	176.0
Serpentine Pipehead Dam Catchment (ha)	0	0	0
Within RPZ and >16% average slope (ha)	0	0	0
Within 10m of BC nesting/significant trees (ha)	0	0	0

### Definitions

- (a) Haul roads includes road infrastructure
- (b) Infrastructure Includes drainage control, mining and monitoring infrastructure

### Maps for Huntly



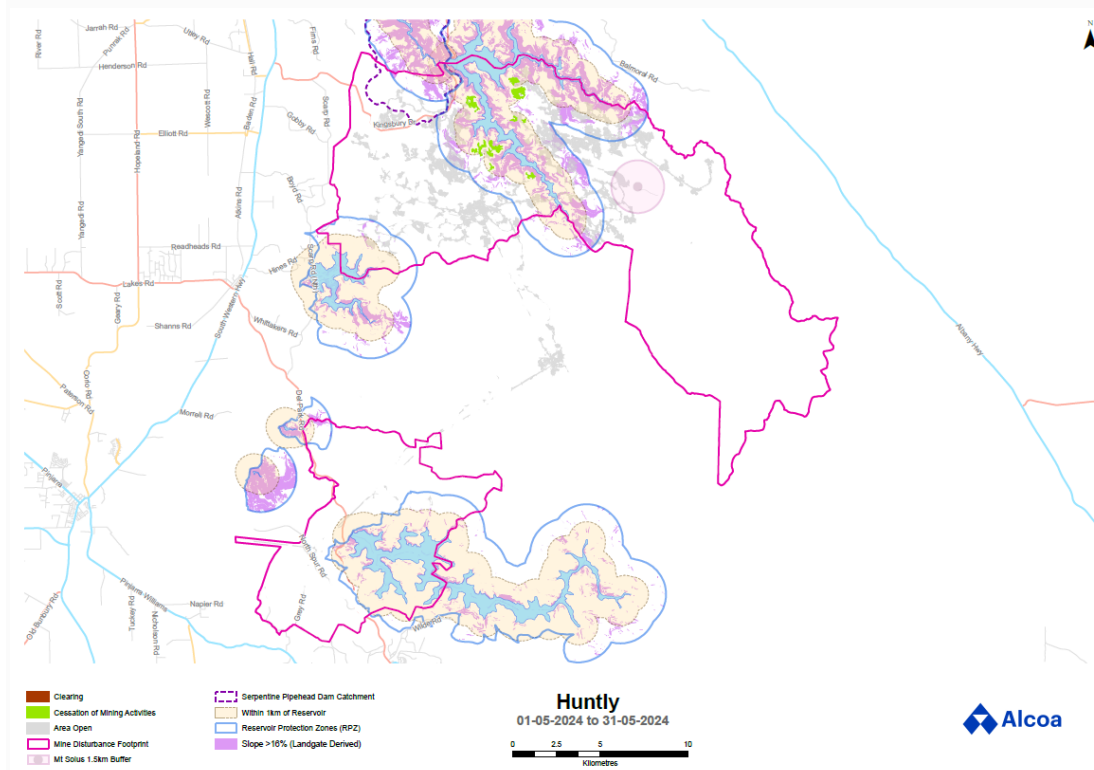
### Maps for Willowdale

Cessation of mining activities in the above-mentioned areas is not applicable to the Willowdale mine

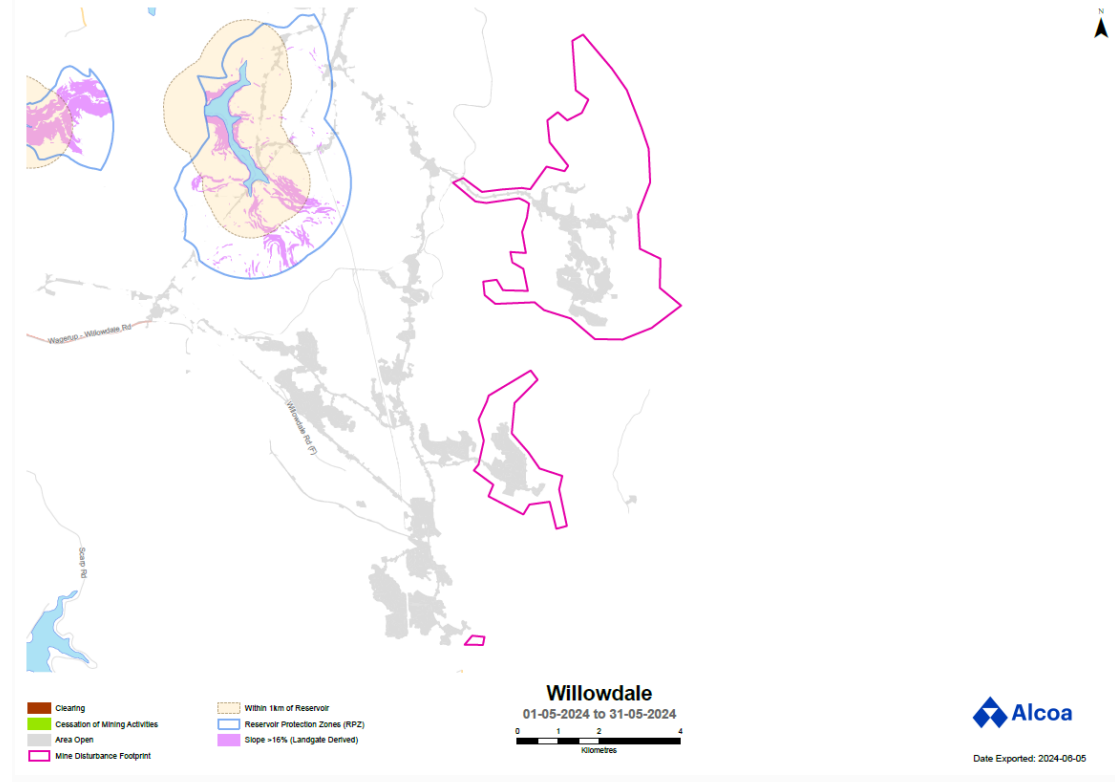
# Appendix A – Monitoring Results



## Huntly

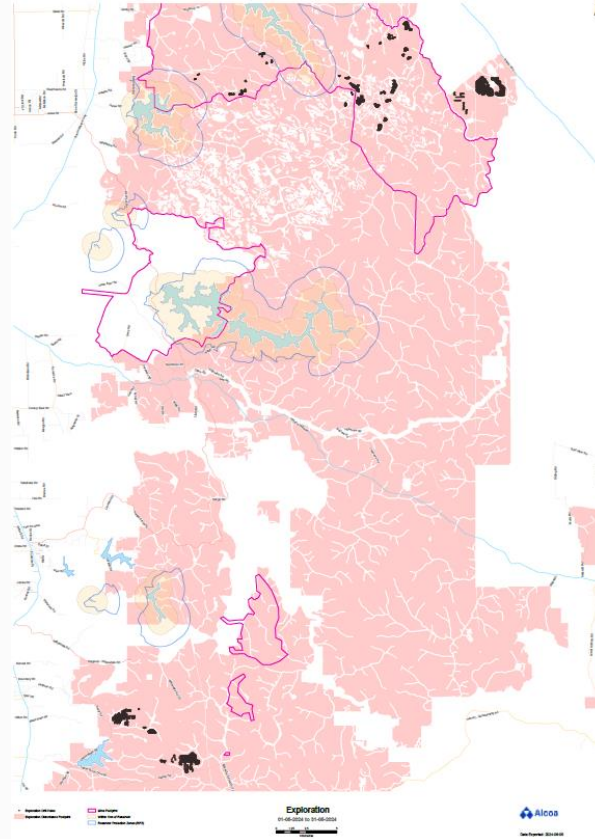


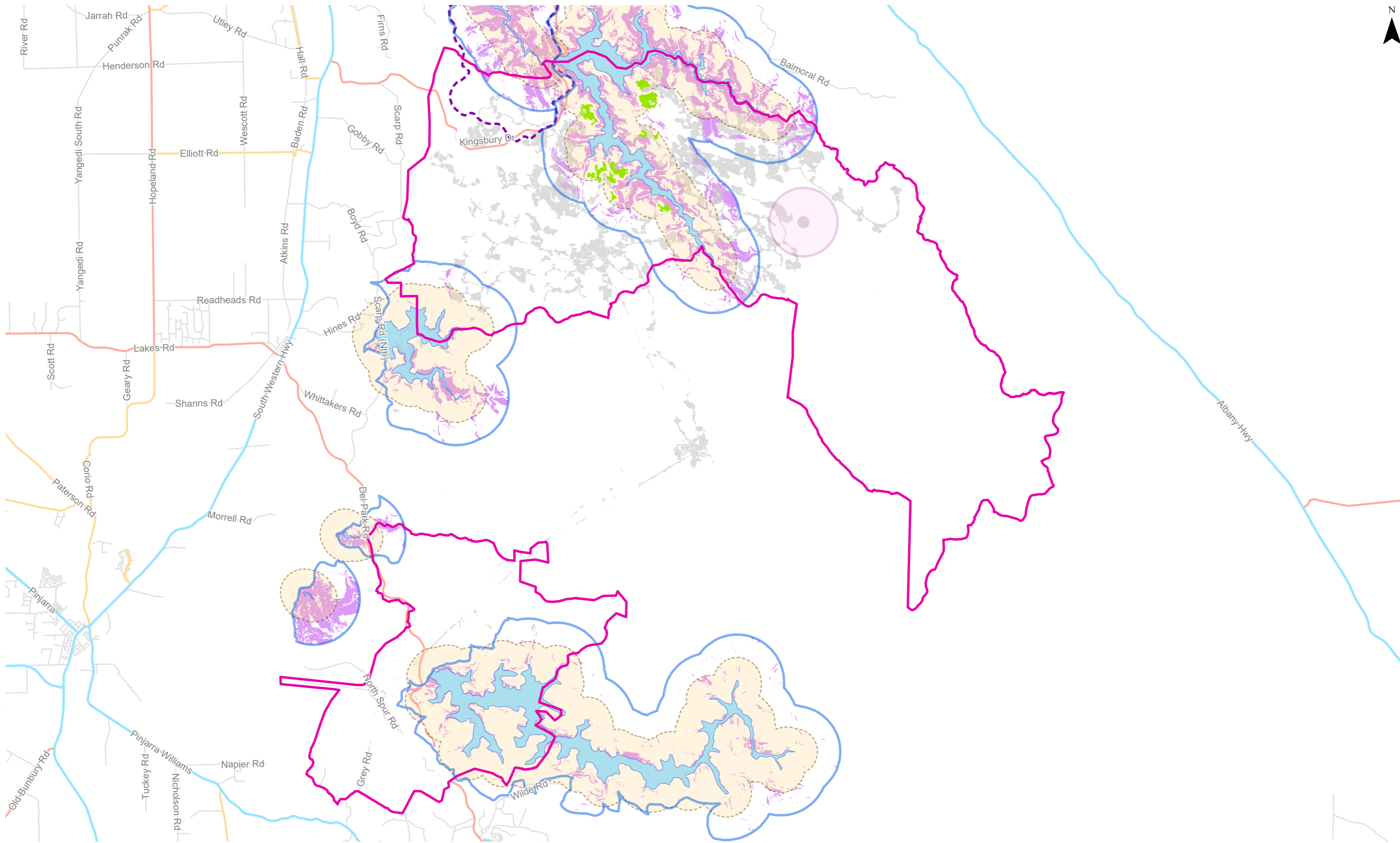
## Willowdale



# Appendix A – Monitoring Results

## Exploration



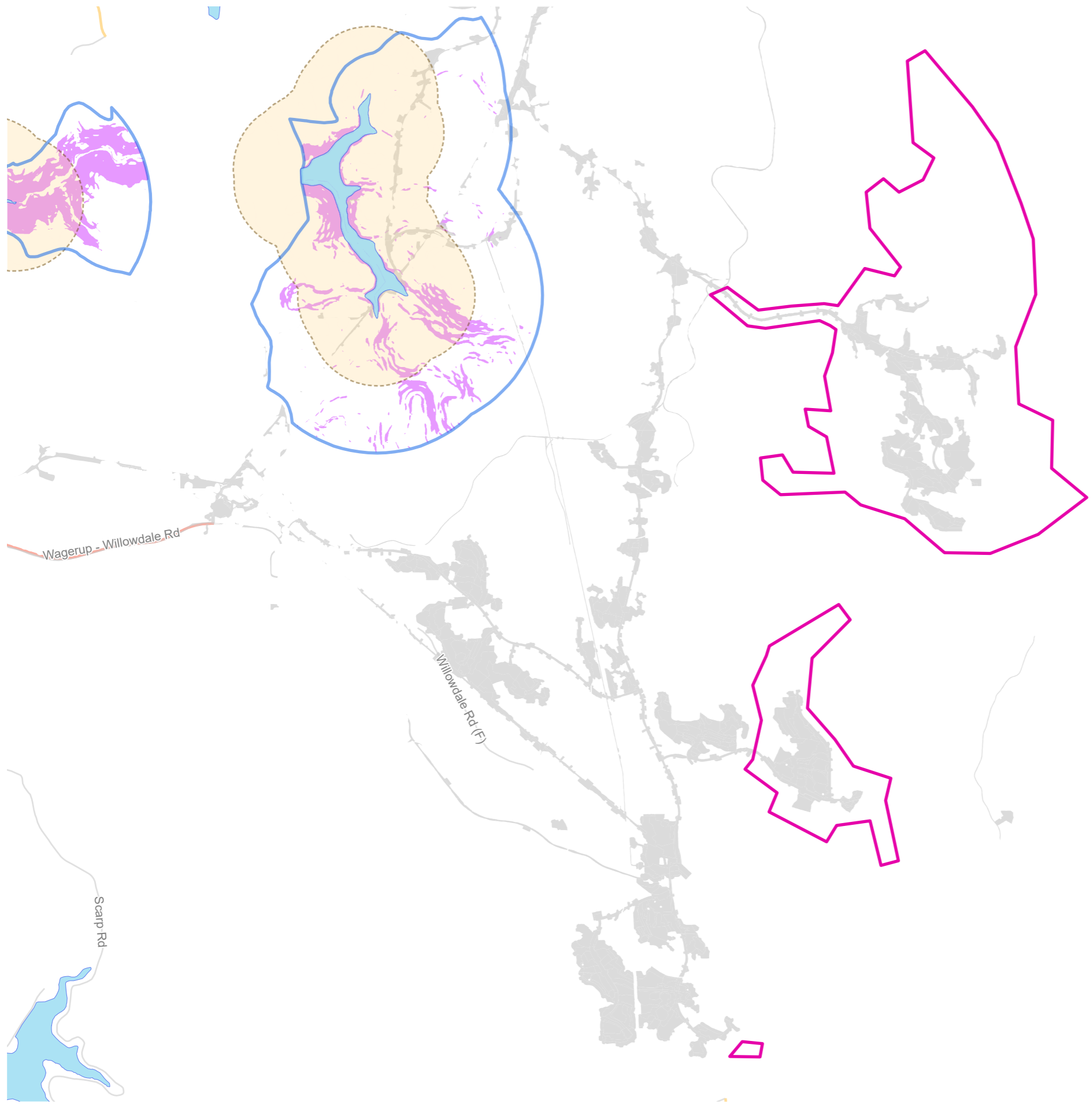




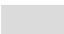

- Clearing
- Cessation of Mining Activities
- Area Open
- Mine Disturbance Footprint
- Serpentine Pipehead Dam Catchment
- Within 1km of Reservoir
- Reservoir Protection Zones (RPZ)
- Slope >16% (Landgate Derived)
- Mt Solus 1.5km Buffer




**Huntly**  
01-05-2024 to 31-05-2024

0      2.5      5      10  
Kilometres

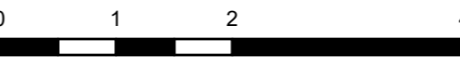




-  Clearing
-  Cessation of Mining Activities
-  Area Open
-  Mine Disturbance Footprint

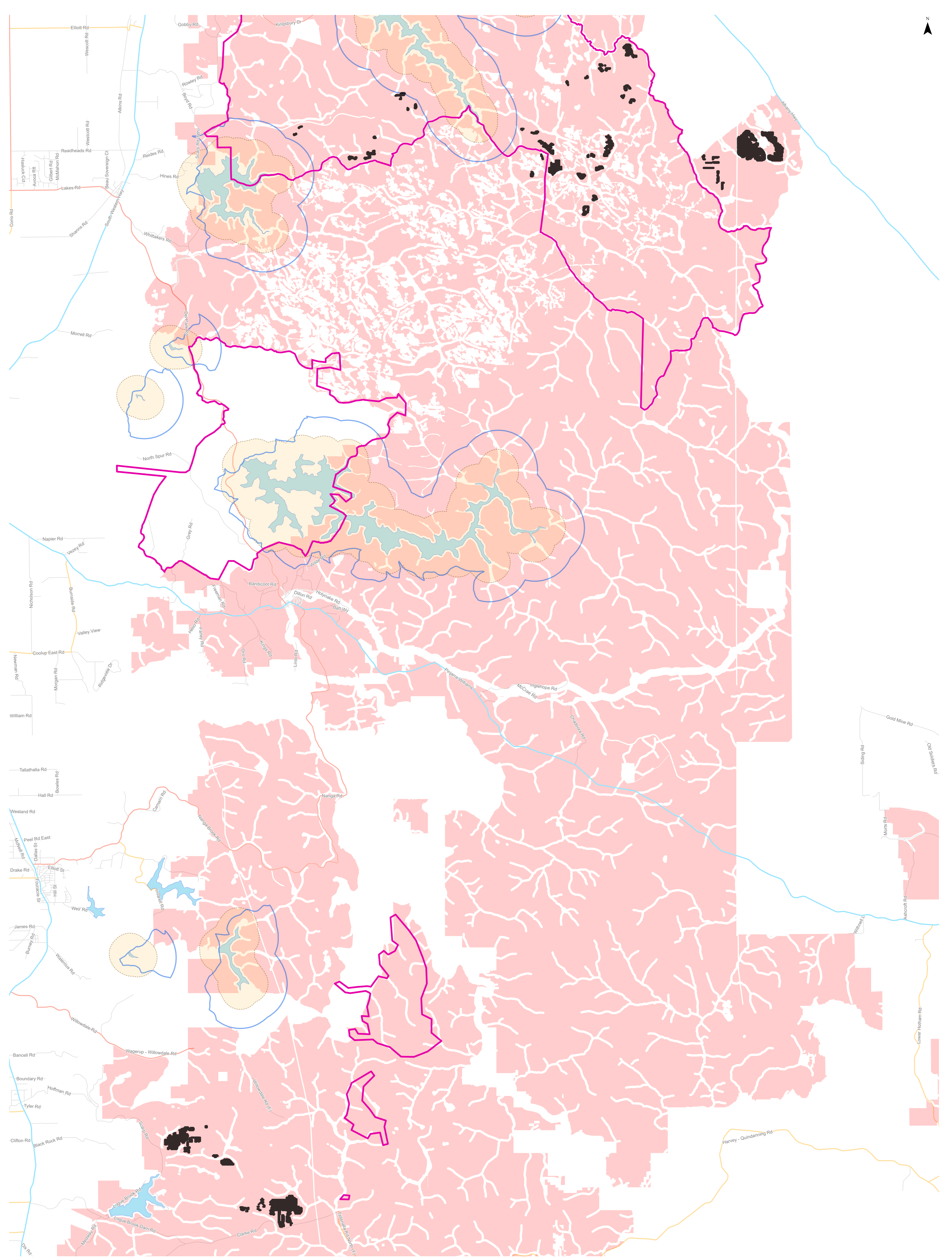
-  Within 1km of Reservoir
-  Reservoir Protection Zones (RPZ)
-  Slope >16% (Landgate Derived)

**Willowdale**  
01-05-2024 to 31-05-2024



Kilometres





- Exploration Drill Holes
- Exploration Disturbance Footprint
- Mine Footprint
- Within 1km of Reservoir
- Reservoir Protection Zones (RPZ)

**Exploration**  
 01-05-2024 to 31-05-2024

0 1.25 2.5 5  
 Kilometres

