

Environmental Protection (Darling Range Bauxite Mining Proposals) Exemption Order 2023

Alcoa Monthly Report
Clause 10

January 2025



Monthly Reporting Dashboard – Page 1





Section 10 Monitoring Potential Drainage Incidents

Turbidity Data		Drainage Incidents	
Site	No. Active Monitors ¹	Site	No. Events (January-25) ²
Huntly	40	Huntly	0
Willowdale	4	Willowdale	0
Total	44	Total	0

¹ Refers only to monitors located in areas covered by the Exemption Order.

² Potential Events - Currently being investigated in accordance with section 6(2) of the Exemption Order to determine whether any of the events were mining related.

Section 2 – Clause 10 2(c) (i) Production and Exploration Summary

Production (HUN and WDL)	Month (Jan-25)	YTD (CY)	Limit	Status
Production Tonnes Huntly	1.3	1.3		
Production Tonnes Willowdale	0.9	0.9		
Total Bauxite Production Tonnes	2.3	2.3	38 MT	
Exploration	Month (Jan-25)	YTD (CY)	Limit	Status
Total Exploration Holes	7,156	7,156	105,000	

Legend



Within Limit



Approaching Limit



Above Limit

Section 3 Clause 10 2(c) (i) and Clause 10 2(c) (iii) Activities Summary and Forecast

Area	January 2025			February 2025			March 2025		
	*Cleared	Stabilised	Seeded	*Clearing	Stabilised	Seeded	*Clearing	Stabilised	Seeded
Huntly									
Total HUN Mine Disturbance Footprint (ha)	13.8	22.4	30.1	25	60	41	26	60	45
Willowdale									
Total WDL mine disturbance footprint (ha)	0	2.2	0.2	0	0	61.8	0	0	58.4

Definitions

- Cleared – disturbance to native vegetation and other flora
- Stabilised– in relation to an area that has been disturbed, means carry out landscaping, ripping and other appropriate operations to prevent erosion of sediment, promote infiltration and manage surface water runoff
- Seeded – landform established and seeding complete

* Clearing only considers completed hectares

Monthly Reporting Dashboard – Page 2

Section 4 – Clause 2(c) (ii) Activities Ceased during the Period for Huntly

Area	January 2025		
	Haul Roads ^(a)	Infrastructure ^(b)	Mining
Within 1km Reservoir (ha)	0	0	0
Serpentine Pipehead Dam Catchment (ha)	0	0	0
Within RPZ and >16% average slope (ha)	0	0	0
Within 10m of BC nesting/significant trees (ha)	0	0	0

Definitions

(a) Haul roads includes road infrastructure

(b) Infrastructure Includes drainage control, mining and monitoring infrastructure

Maps for Huntly

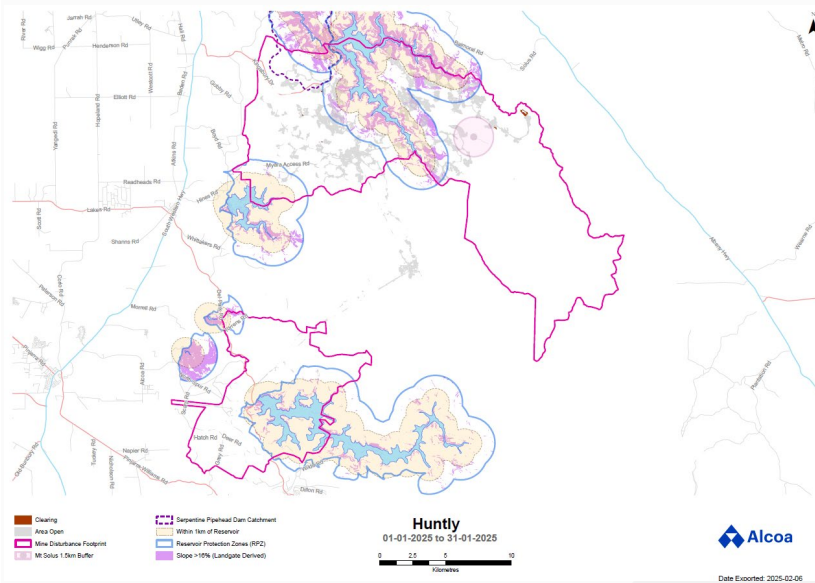
No cessation activities to report this month

Maps for Willowdale

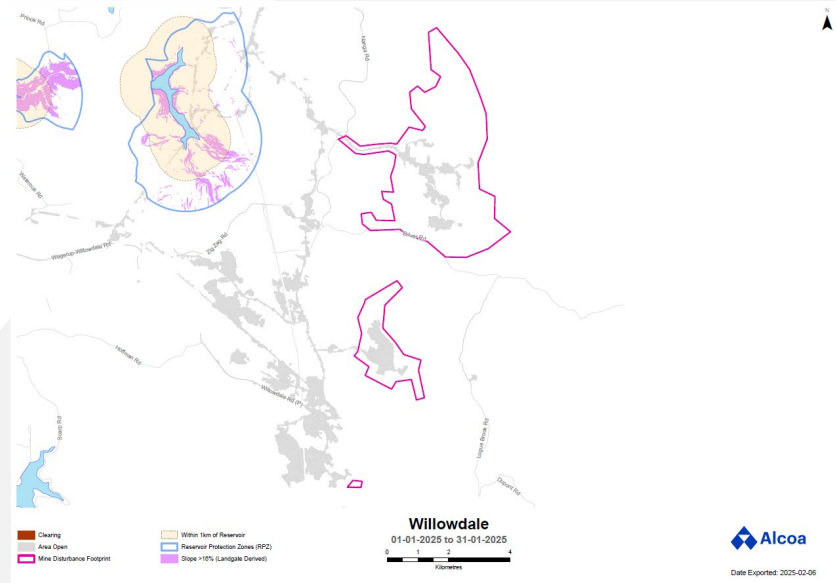
Cessation of mining activities in the above-mentioned areas is not applicable to the Willowdale mine

Appendix A – Monitoring Results

Huntly

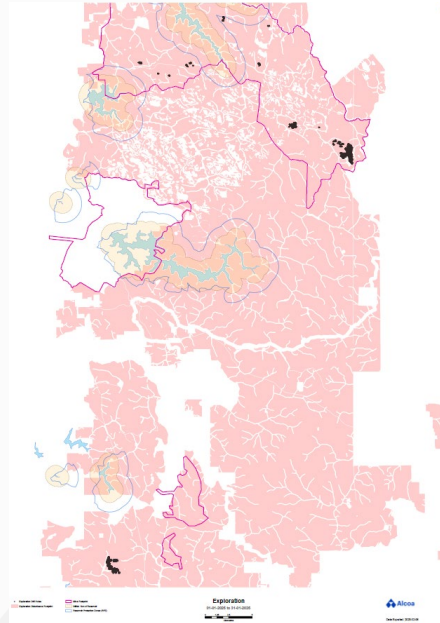


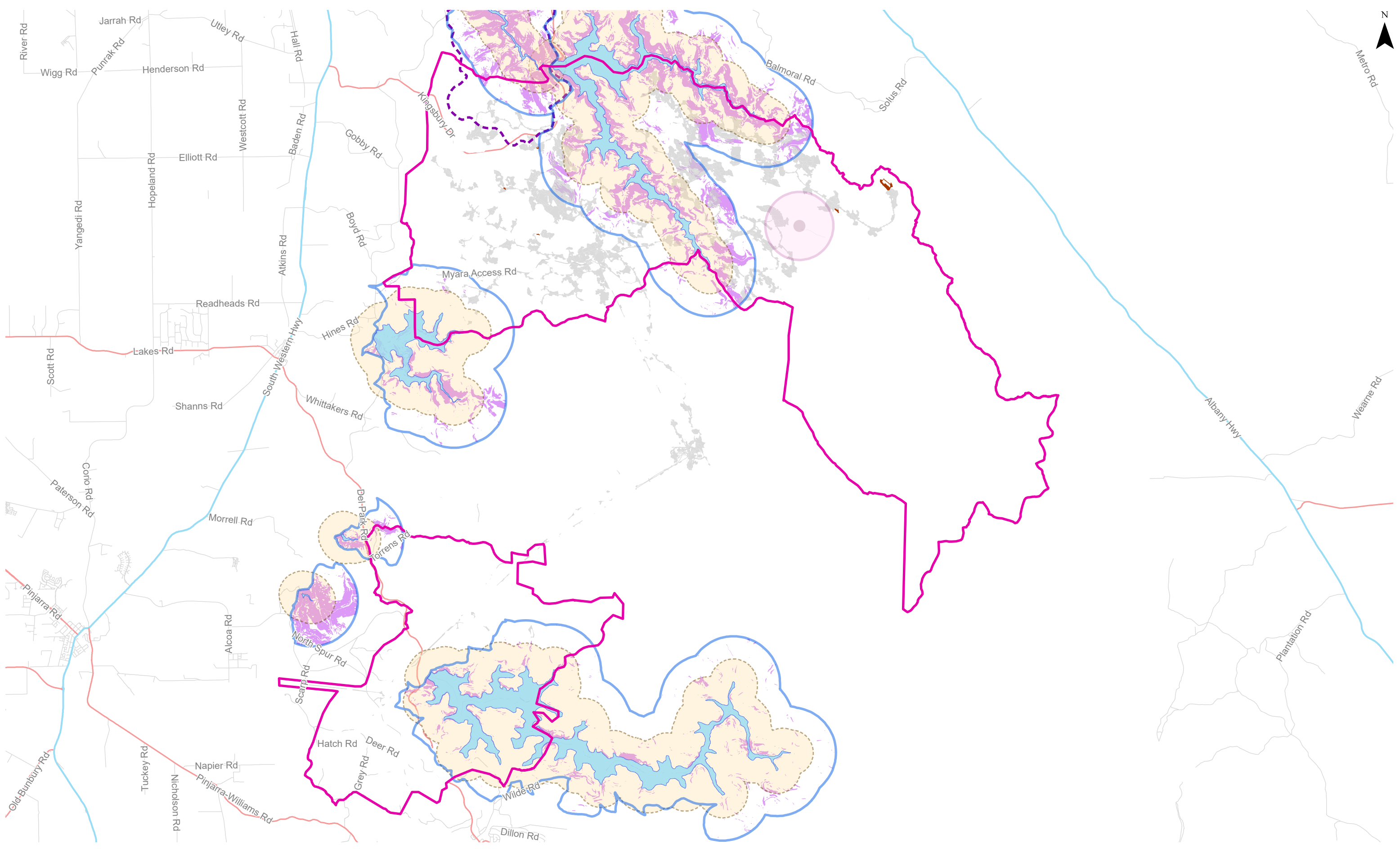
Willowdale



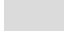







Appendix A – Monitoring Results

Exploration



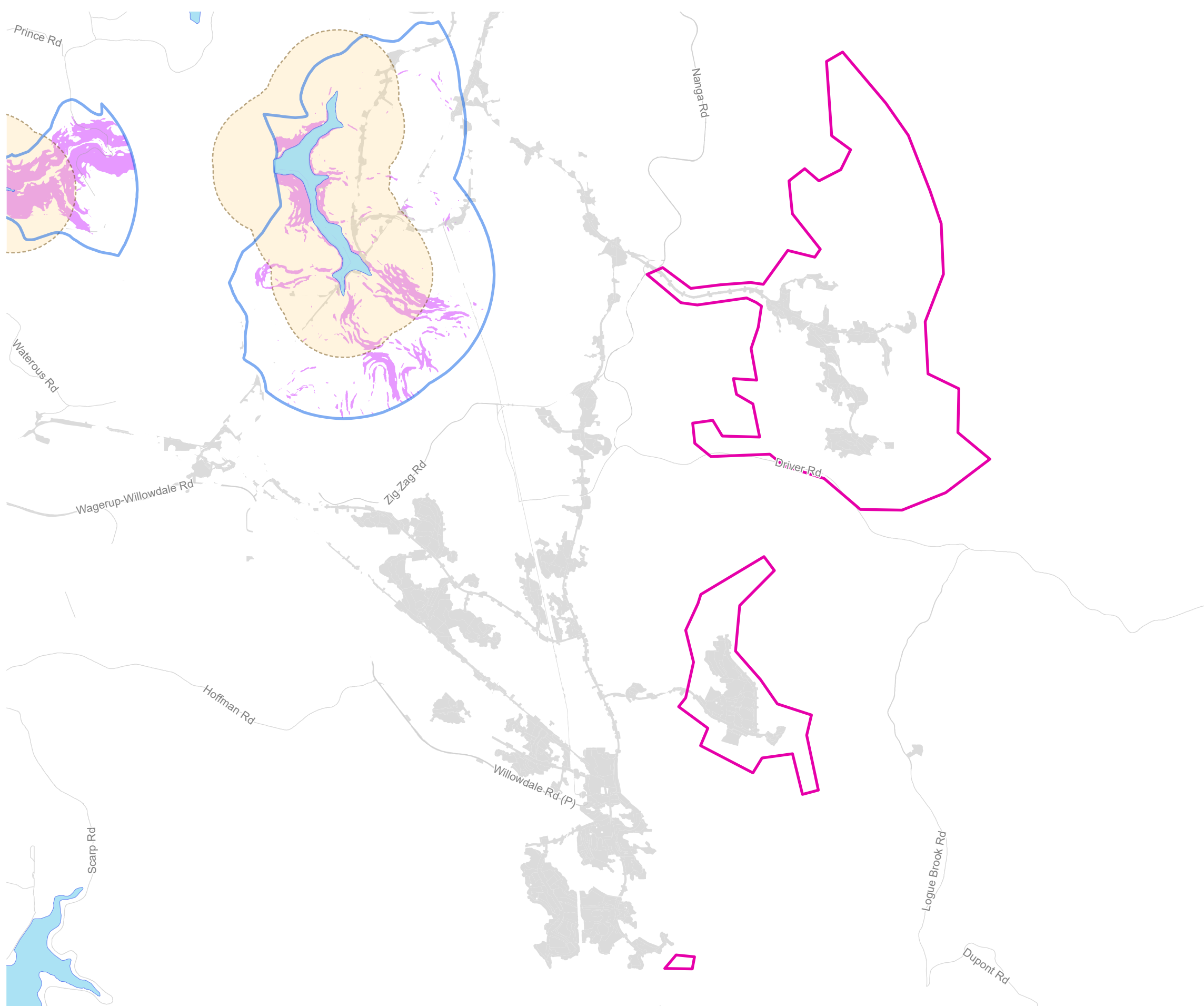



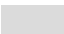

- | | | | |
|--|----------------------------|---|-----------------------------------|
|  | Clearing |  | Serpentine Pipehead Dam Catchment |
|  | Area Open |  | Within 1km of Reservoir |
|  | Mine Disturbance Footprint |  | Reservoir Protection Zones (RPZ) |
|  | Mt Solus 1.5km Buffer |  | Slope >16% (Landgate Derived) |




Huntly
01-01-2025 to 31-01-2025

0 2.5 5 10
Kilometres





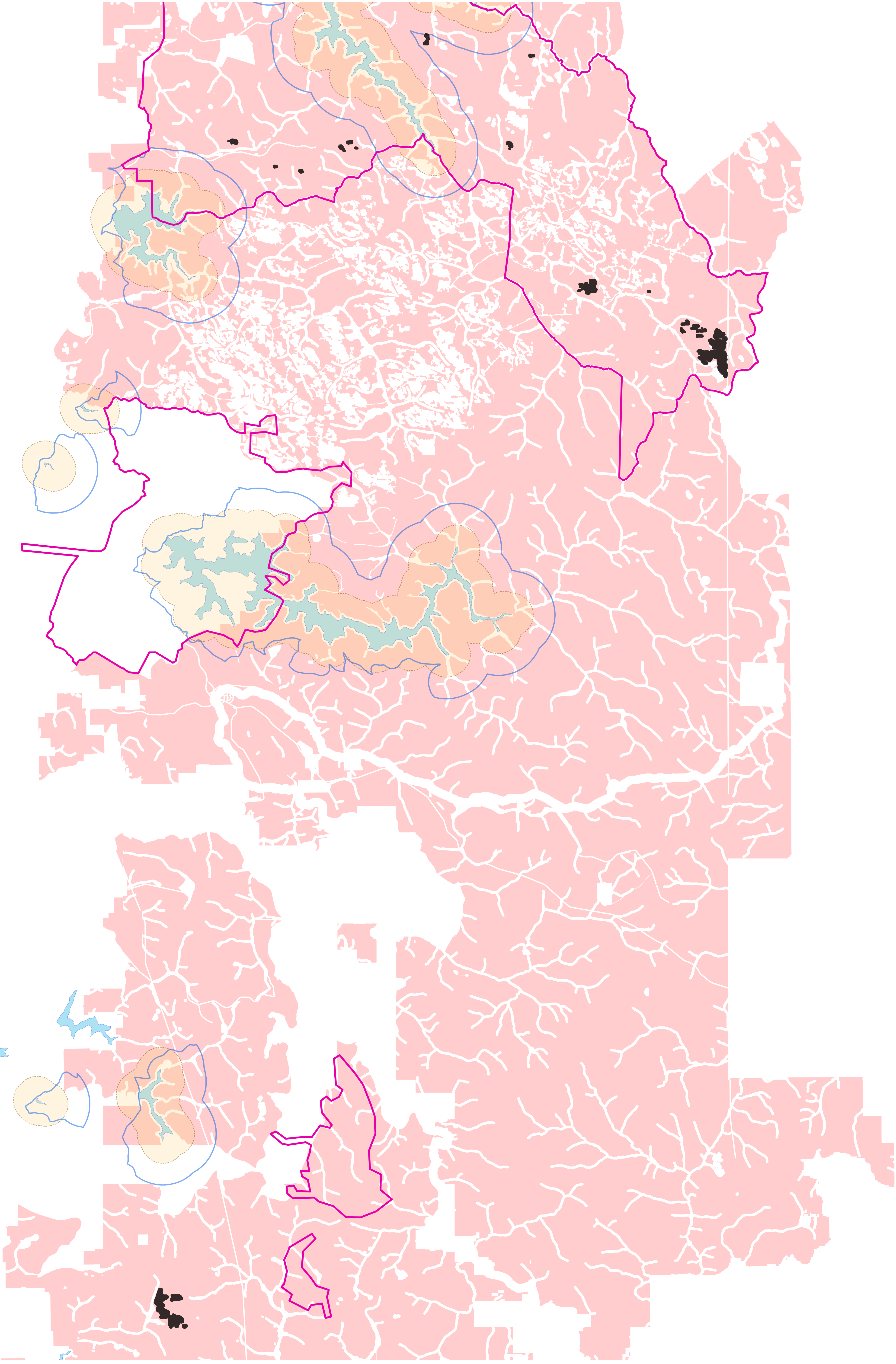
-  Clearing
-  Area Open
-  Mine Disturbance Footprint

-  Within 1km of Reservoir
-  Reservoir Protection Zones (RPZ)
-  Slope >16% (Landgate Derived)

Willowdale
01-01-2025 to 31-01-2025

0 1 2 4
Kilometres





- Exploration Drill Holes
- Exploration Disturbance Footprint
- Mine Footprint
- Within 1km of Reservoir
- Reservoir Protection Zones (RPZ)

Exploration
01-01-2025 to 31-01-2025

0 1.25 2.5 5
Kilometres

