

# **Environmental Protection (Darling Range Bauxite Mining Proposals) Exemption Order 2023**

**Alcoa Monthly Report  
Clause 10**

January 2024



# Monthly Reporting Dashboard – Page 1



## Section 1 – Clause 6 Drainage Incidents and Turbidity Data

Drainage Incidents		Turbidity Data		
Site	No. Events (Jan-24)	Site	No. Active Monitors	No. Events (Jan-24)
Huntly	0	Huntly	21	0
Willowdale	0	Willowdale	14	1 (NMR)
<b>Total</b>	<b>0</b>	<b>Total</b>	<b>35</b>	<b>1</b>

- NMR refers to non-mining related incidents
- Alcoa has provided the raw turbidity monitoring data to the CEO as required by Clause 10(2)(b) of the *Environmental Protection (Darling Range Bauxite Mining Proposals) Exemption Order 2023*. Publication of the raw data has been deferred until 15 May 2024 to facilitate presentation of raw turbidity data in a manner that is transparent and interpretable by the public. .

## Section 2 – Clause 10 2(c) (i) Production and Exploration Summary

Production (HUN and WDL)	Month (Jan-24)	YTD (CY)	Limit	Status
Production Tonnes Huntly	2.1 M	2.1 M		
Production Tonnes Willowdale	0.8 M	0.8 M		
<b>Total Bauxite Production Tonnes</b>	<b>2.9 M</b>	<b>2.9 M</b>	<b>38 MT</b>	

Exploration	Month (Jan-24)	YTD (CY)	Limit	Status
<b>Total Exploration Holes</b>	<b>7,212</b>	<b>7,212</b>	<b>105,000</b>	

**Legend**

Within Limit

Approaching Limit

Above Limit

## Section 3 Clause 10 2(c) (i) and Clause 10 2(c) (iii) Activities Summary and Forecast

Area	January 2024			February 2024			March 2024		
	Cleared	Stabilised	Seeded	Clearing	Stabilised	Seeded	Clearing	Stabilised	Seeded
<b>Huntly</b>									
<b>Total HUN Mine Disturbance Footprint (ha)</b>	<b>10</b>	<b>40*</b>	<b>52</b>	<b>0**</b>	<b>9</b>	<b>79</b>	<b>0**</b>	<b>11</b>	<b>149</b>
<b>Willowdale</b>									
<b>Total WDL mine disturbance footprint (ha)</b>	<b>0</b>	<b>0</b>	<b>0</b>	<b>0**</b>	<b>0</b>	<b>25</b>	<b>0**</b>	<b>0</b>	<b>10</b>

### Definitions

- Cleared – disturbance to native vegetation and other flora
- Stabilised– in relation to an area that has been disturbed, means carry out landscaping, ripping and other appropriate operations to prevent erosion of sediment, promote infiltration and manage surface water runoff
- Seeded – landform established and seeding complete

\* Changed from the original submission due to timing of the extraction of the data

\*\* Forecast for April is pending FCA approval to clear at Huntly therefore clearing has not occurred in February

# Monthly Reporting Dashboard – Page 2



## Section 4 – Clause 2(c) (ii) Activities Ceased during the Period

Area	January 2024			<b>Definitions</b> (a) Haul roads includes road infrastructure (b) Infrastructure Includes drainage control, mining and monitoring infrastructure
	Haul Roads <sup>(a)</sup>	Infrastructure <sup>(b)</sup>	Mining	
Within 1km Reservoir (ha)	None this period	None this period	None this period	
Serpentine Pipehead Dam Catchment (ha)	None this period	None this period	None this period	
Within RPZ and >16% average slope (ha)	None this period	None this period	None this period	
Within 10m of BC nesting/significant trees (ha)	None this period	None this period	None this period	

**Maps for Huntly**

Alcoa anticipates cessation activities to commence in March 2024 in line with the current plan

**None for January 2024**

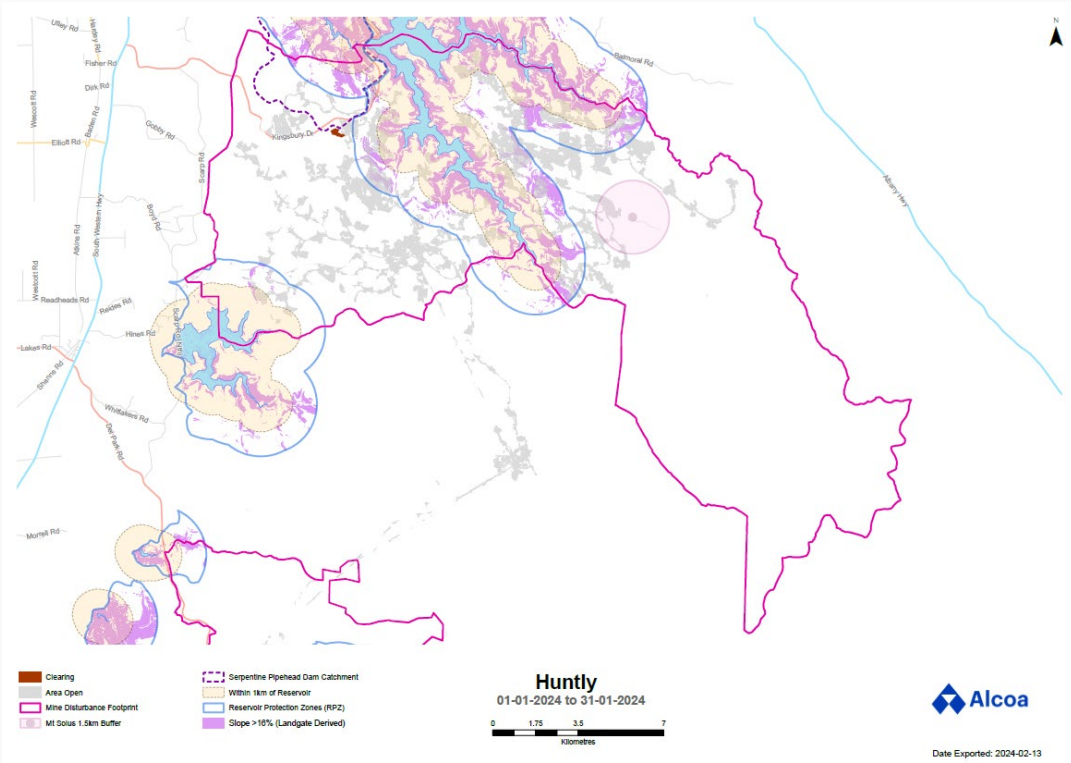
**Maps for Willowdale**

Cessation of mining activities in the above-mentioned areas is not applicable to the Willowdale mine

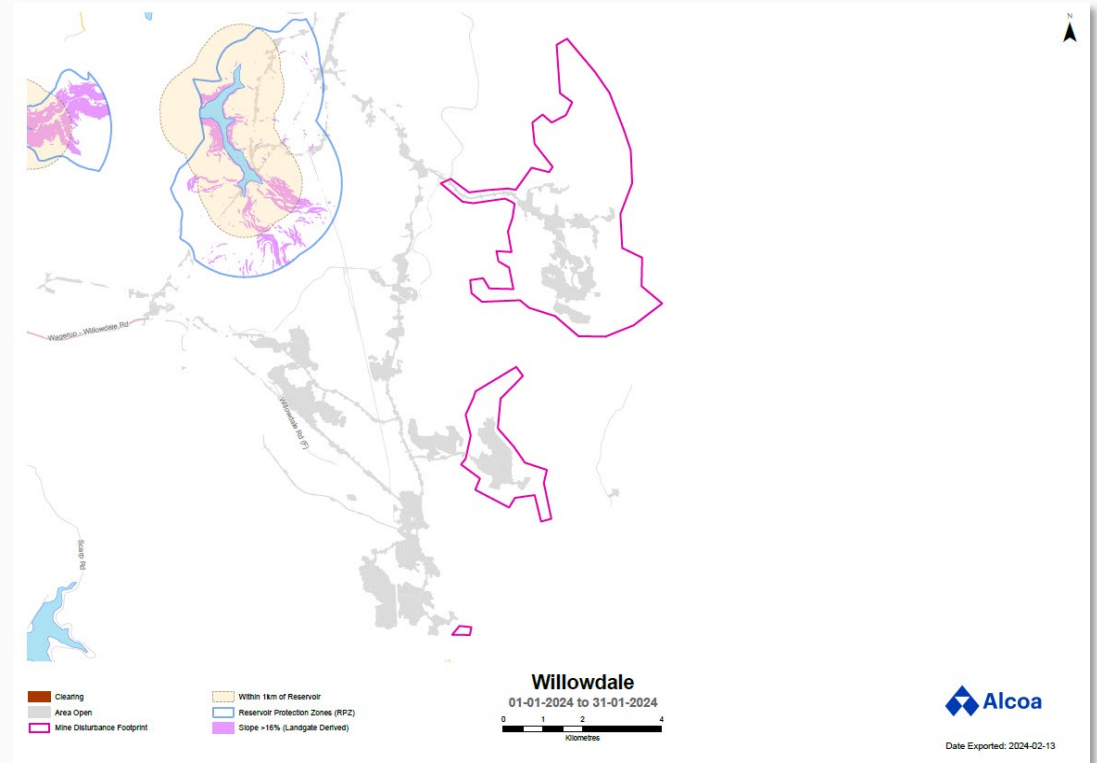
**None for January 2024**

# Appendix A – Monitoring Results

## Huntly



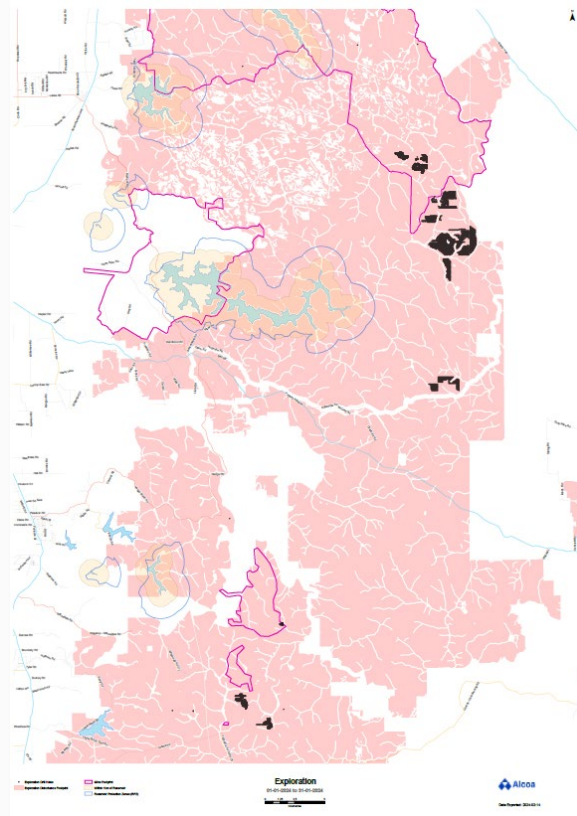
## Willowdale

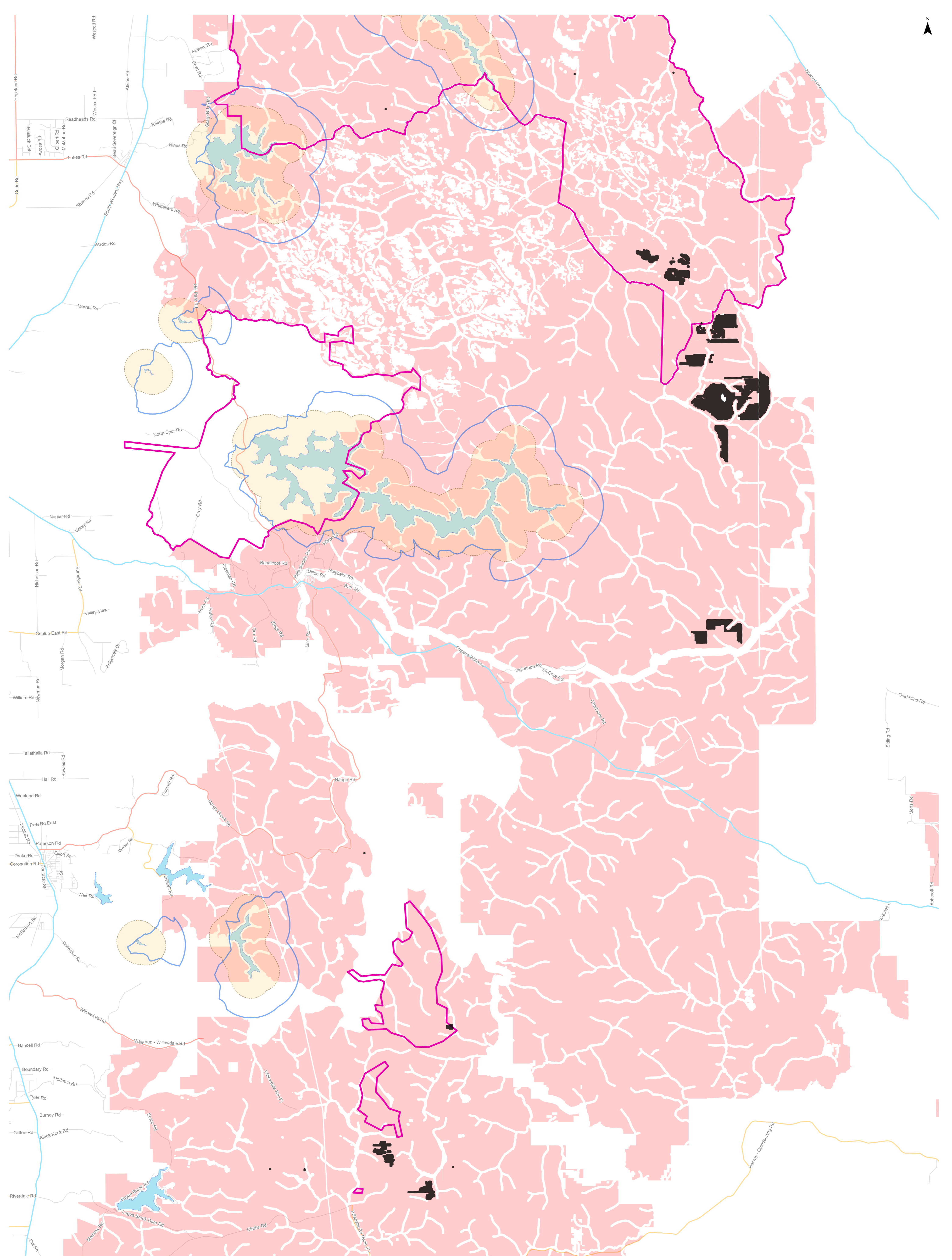


# Appendix A – Monitoring Results



## Exploration



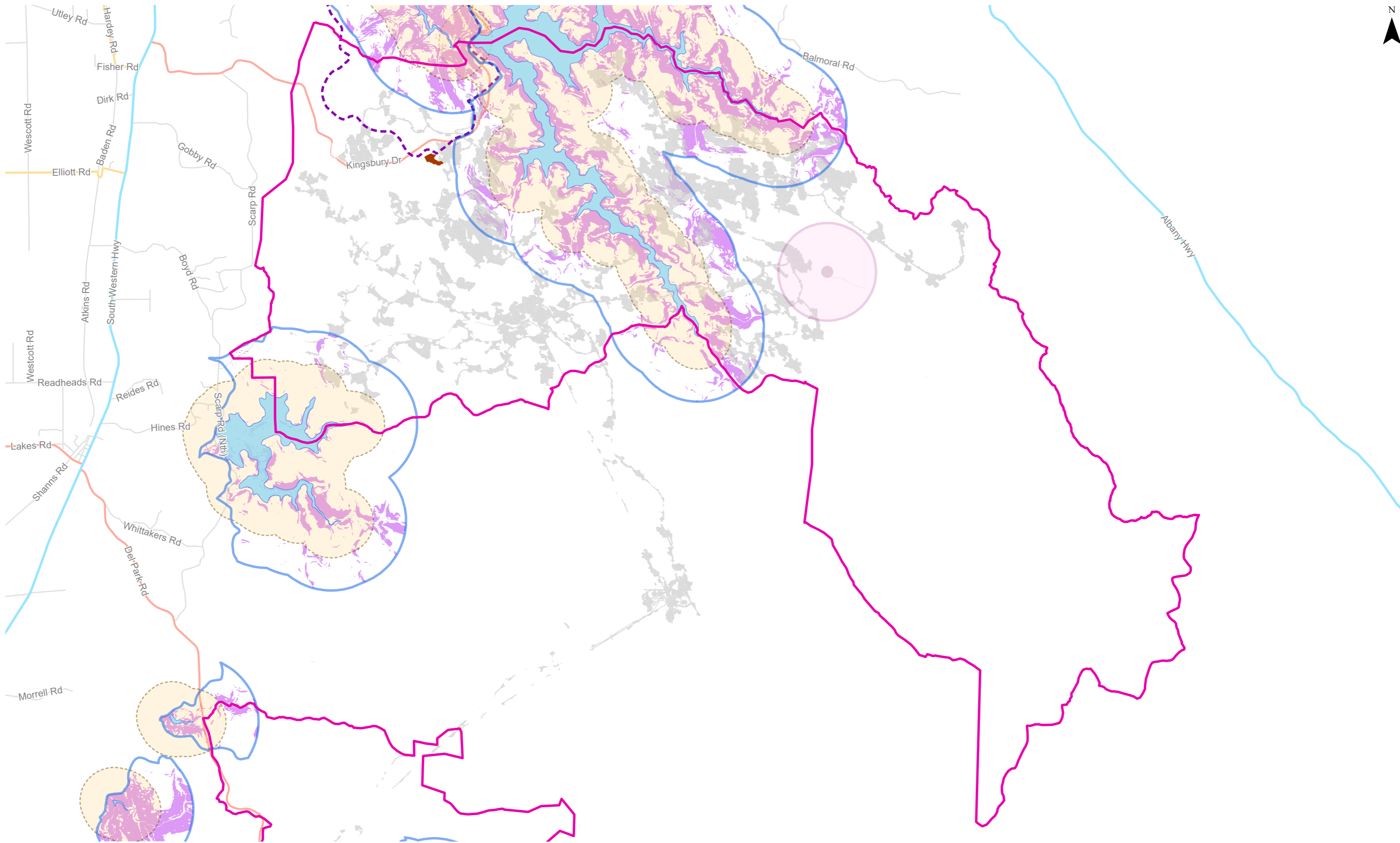


- Exploration Drill Holes
- Mine Footprint
- Exploration Disturbance Footprint
- Within 1km of Reservoir
- Reservoir Protection Zones (RPZ)

**Exploration**  
 01-01-2024 to 31-01-2024

0 1.25 2.5 5  
 Kilometres

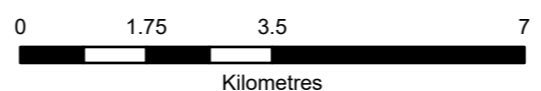


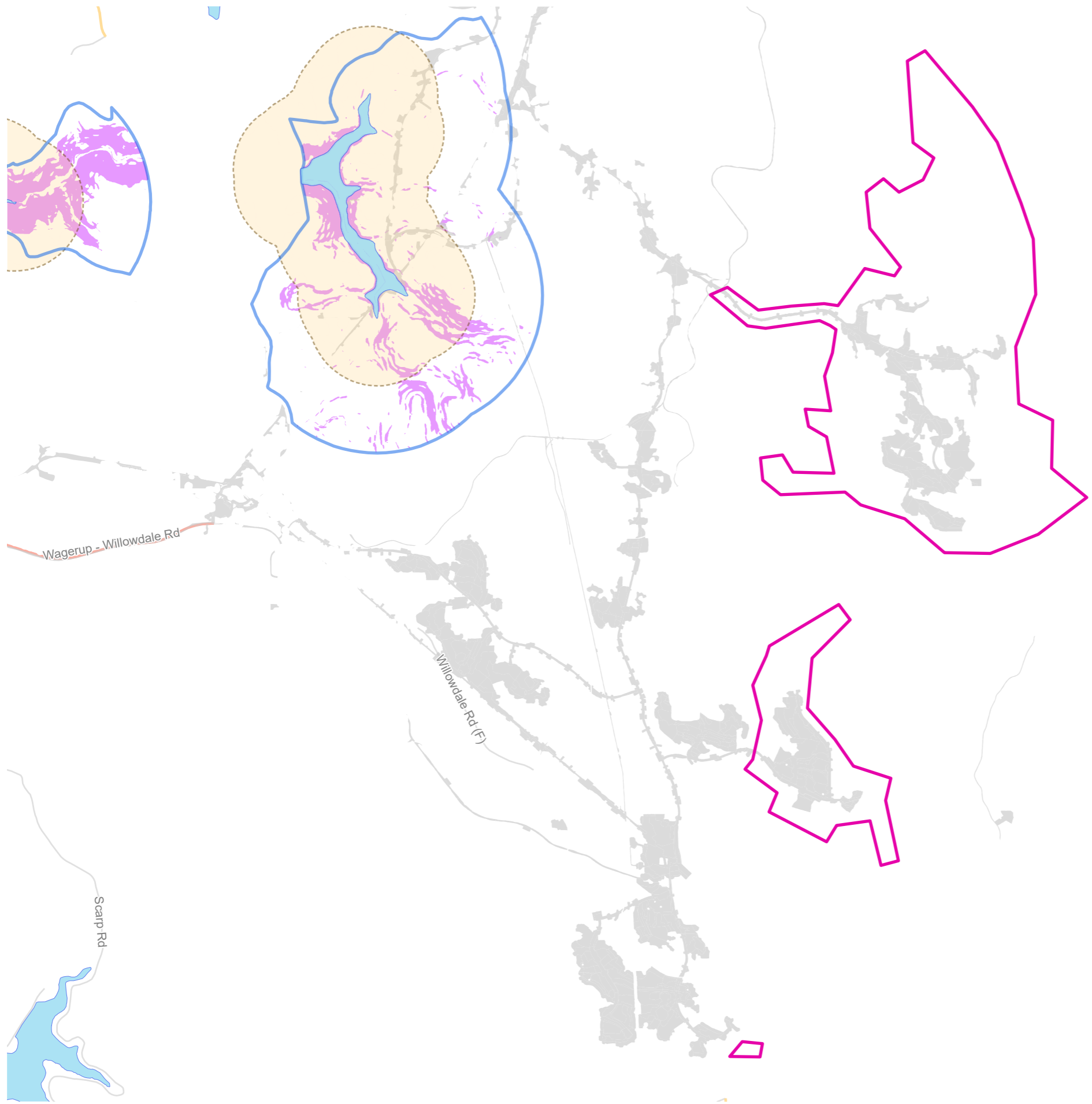


- Clearing
- Area Open
- Mine Disturbance Footprint
- Mt Solus 1.5km Buffer
- Serpentine Pipehead Dam Catchment
- Within 1km of Reservoir
- Reservoir Protection Zones (RPZ)
- Slope >16% (Landgate Derived)

# Huntly

01-01-2024 to 31-01-2024





- Clearing
- Area Open
- Mine Disturbance Footprint

- Within 1km of Reservoir
- Reservoir Protection Zones (RPZ)
- Slope >16% (Landgate Derived)

**Willowdale**  
01-01-2024 to 31-01-2024

Kilometres

