



Alcoa Anglesea

# Community Engagement Report Appendices

Published July 2024

# Appendix 1 | Information boards





# Welcome

Alcoa acknowledges Wadawurrung People as the Traditional Owners of the land where we operate and we pay our respects to their Elders past, present and emerging.

Kuarka Dorla Dja, (Anglesea) is a place where Wadawurrung ancestors came to fish for mullet.

Bounded by intricate waterways flowing out to the Warri (salt water), sand dunes steeped in heritage, and the high point of country the Anglesea Heathlands, where the Mirri (sun) rises on the Warri (salt water) and sets across the heath.

We acknowledge Bunjil as the Creator Spirit, who continues to watch over the land and guide us all on our journey and responsibility to heal country.

Artwork © Billy-Jay O'Toole, 'Kuarka Dorla Dja', 2023.



# Mine Rehabilitation and Closure Plan

## Delivering a space for community

Alcoa have a regulatory obligation to deliver the final Anglesea Mine Rehabilitation and Closure Plan.

Major earthworks and revegetation activities completed in 2020, have delivered a safe, stable and sustainable landform, which will require ongoing monitoring and maintenance over the next decade.

The key remaining aspect of the Plan is an approved strategy to fill and maintain the mine pit with water.

A range of potential options to support filling the mine pit in a timely manner have been investigated and of these, the only two currently feasible options are the use of groundwater from the Upper Eastern View Formation (UEVF) which would see the mine pit filled in seven to 10 years, or natural fill.

## Options considered

UEVF groundwater - Alcoa licence  
LEVF groundwater - Barwon Water licence

Recycled water - Breamlea treatment plant

Natural fill - estimated to take approximately 50 years

Seawater and/or desalination

Salt Creek restoration





# Mine Water Filling Strategy

Approximately **18 gigalitres** of water is needed to fill the mine pit. As at April 2024, there is approximately **three gigalitres** of water present.

Alcoa's preferred option is to fill the mine pit over seven to 10 years, achieved through supplementing natural filling of the mine with a combination of UEVF groundwater and potential peak flows from Salt Creek. Extensive technical work undertaken over more than three years has not identified any adverse impact on groundwater dependent ecosystems, including the Anglesea River.

## Why water?

Creating a water body supports:

- Benefits to the environment, the regional economy and the community from the future land use of the rehabilitated landscape
- A critical fire break to minimise fire risk to the Anglesea township
- Geotechnical stability through the weight of water at the base of the mine

## Regional benefits of a fast fill strategy

Filling the pit in a shorter time frame will:

- Facilitate earlier community access to the rehabilitated mine site
- Have the potential to support long-term management options for the Anglesea River
- Help stabilise the aquifer systems locally intersected by the mine pit

## Independent of future land uses

Alcoa have a regulatory obligation to develop the final Anglesea Mine Rehabilitation and Closure Plan. The mine water filling strategy is independent of any future land use concepts that may be realised.

# What's below the surface?

## Understanding the hydrogeology

Different layers of geology impact the interaction between groundwater and surface water.

The Upper Eastern View Formation (UEVF) hosts multiple sub-aquifers, located either in the upper section (upper sands) or lower sections (lower sands).

Separating the upper and lower sub-aquifers are multiple low permeability layers of coals and sandy clays.

The permeabilities of these layers are typically equivalent to EPA specified landfill liner requirements.

Water pressure is higher in the saturated low permeability layers of coals and clays compared to the upper and lower sands – which indicates a degree of disconnectivity.

Clay also lines the base of the creek systems, inhibiting surface and groundwater interaction.

Demon Bluff Formation



Boonah Formation

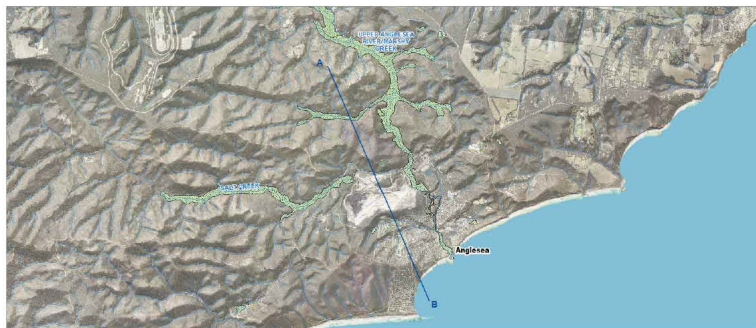
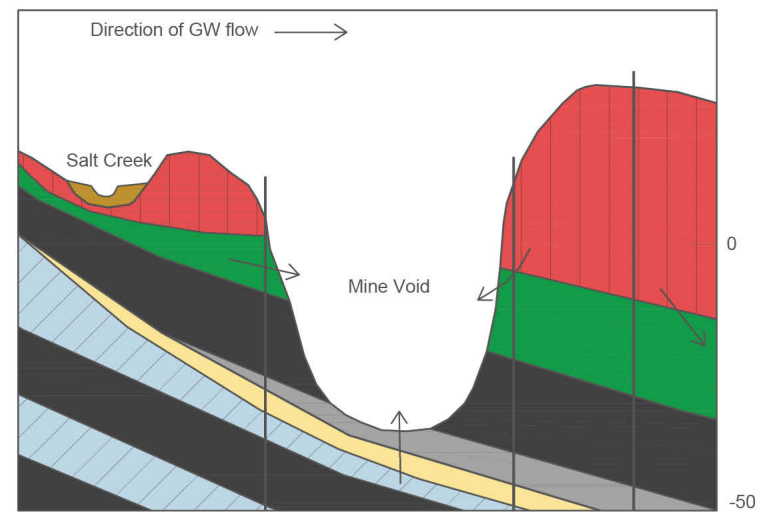
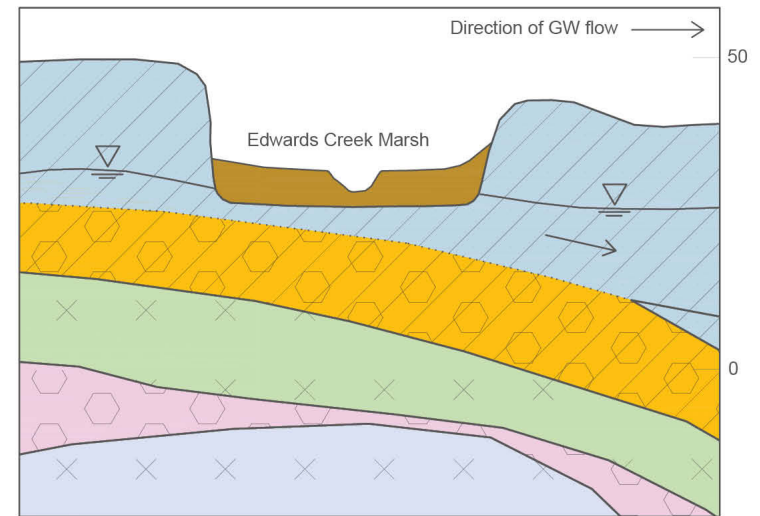
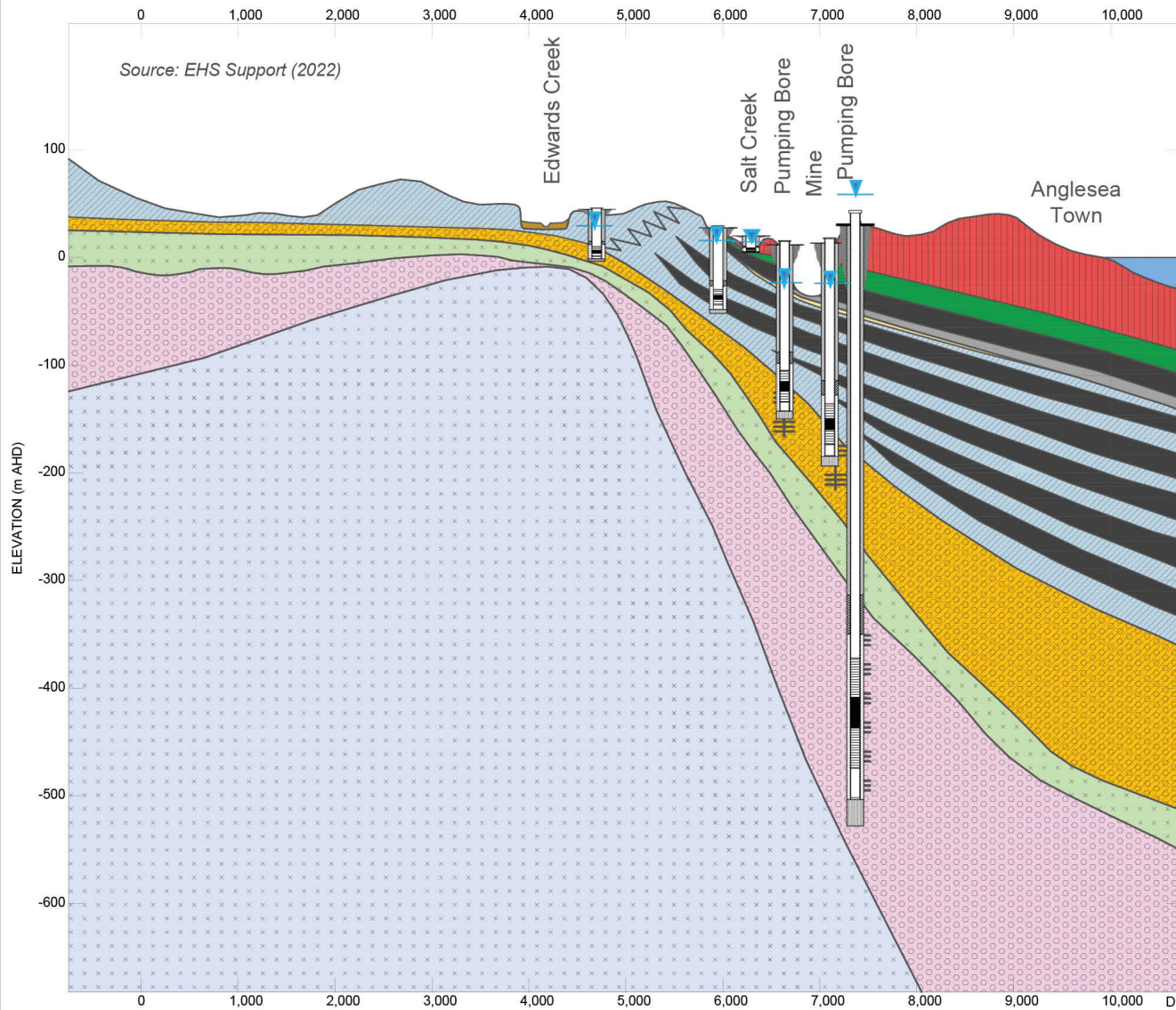


UEVF clay



UEVF sands



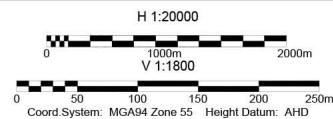


**MATERIAL GRAPHIC**

- Clayey Gravel
- Clayey Sand
- Well-graded Sand
- Siltstone
- Silt

**GEOLOGY UNIT 1**

- Channel Alluvial
- Demos Bluff Group
- Boonah Formation
- Upper Eastern View Formation (Coal Seam)
- Upper Eastern View Formation (Basal Clay)
- Upper Eastern View Formation (Upper Sands)
- Upper Eastern View Formation (Intermediate)
- Upper Eastern View Formation (Lower Sands)
- Middle Eastern View Formation
- Lower Eastern View Formation
- Torquay Group



TITLE		DRAWN	DATE
Alcoa of Australia Limited Anglesea Alcoa Anglesea Mine and Power Station			25/11/2021
		CHECKED	25/11/2021
SCALE		A3	
PROJECT No		FIGURE No	
AUS##C03093_2020			



# Exploring historical groundwater behaviour

## What story does history tell?

Groundwater pressures in the lower sands of the UEVF have ranged between -90 to 0 mAHD. Since the 1990s when shallow aquifer monitoring began, this lower aquifer depressurisation has not impacted the shallow aquifers' water table, indicating the 'cone of depression' is confined to the pumped aquifer.

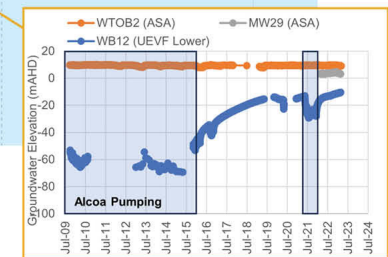
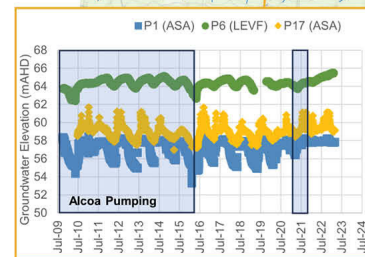
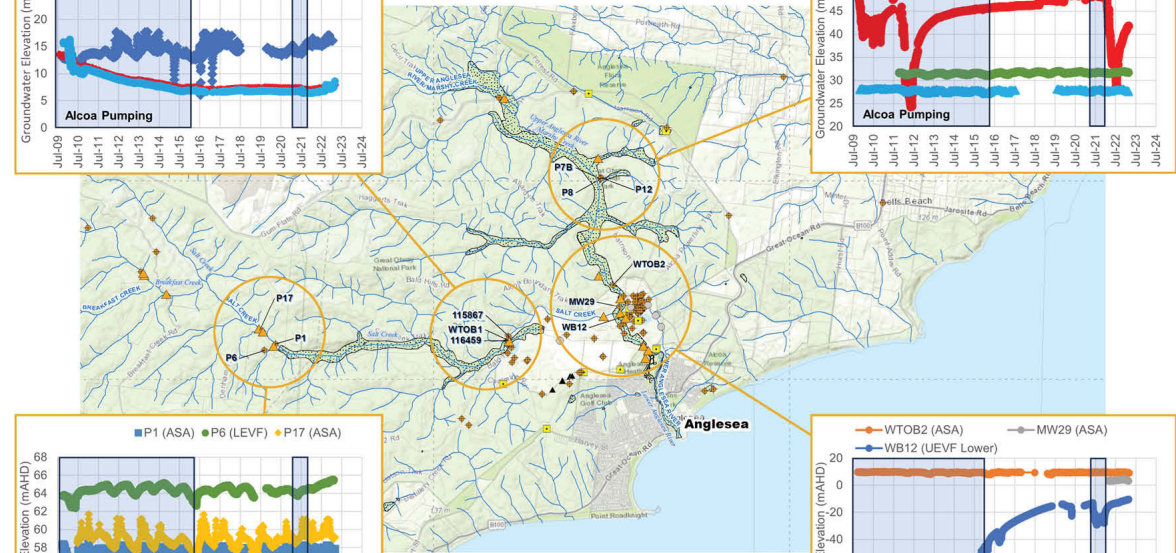
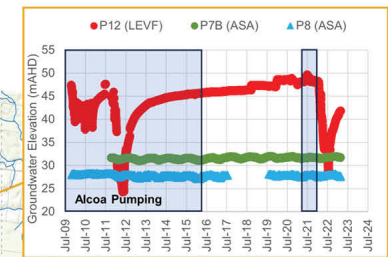
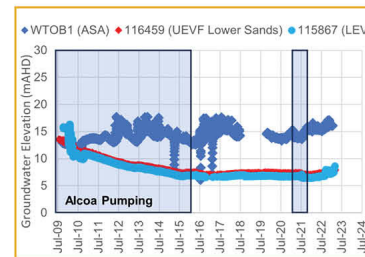
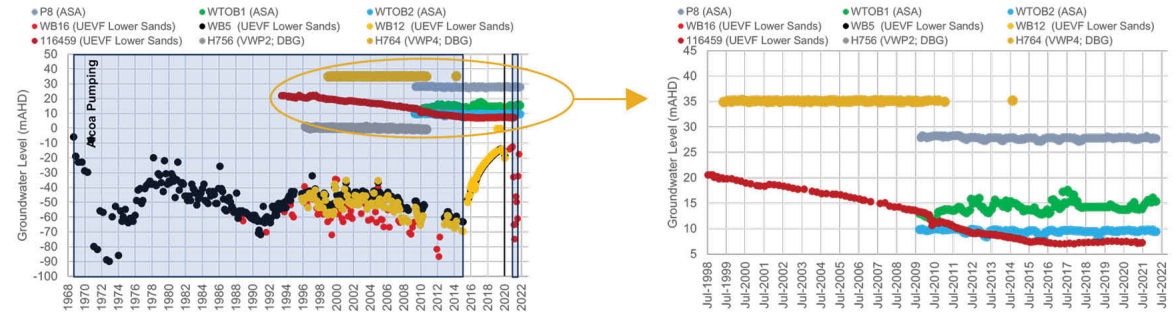
Groundwater levels in the alluvial swamp aquifer (ASA) respond closely to seasonal rainfall - declining when the proceeding months are low in rainfall and/or evapotranspiration is high.

Groundwater trends in the ASA behaves similarly regardless if the UEVF potentiometric surface or 'cone of depression' is higher or lower than the water table in the ASA.

## For example:

P8 (screened in the ASA with potential gaining conditions) experiences similar behaviors as WTOB2 (screened in the ASA with potential losing conditions).

This indicates that at these locations, the base of the ASA is relatively impermeable with the clay layer retarding vertical water movement. Rather climatic conditions such as rainfall and evapotranspiration control water level behaviour and consequently, timing of surface water flow.



# Groundwater pumping test

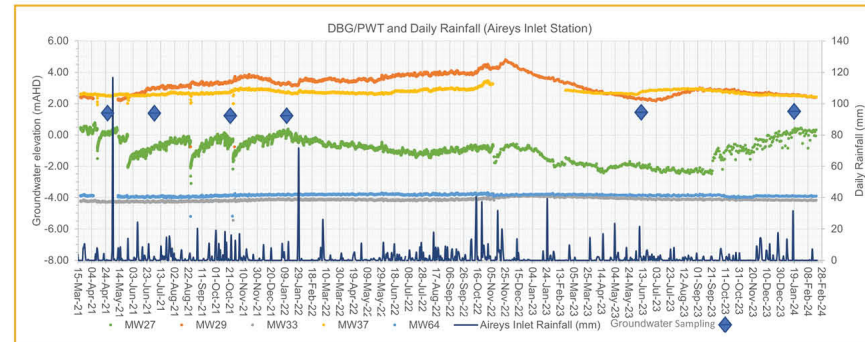
In 2021 Alcoa undertook a groundwater pumping test on the UEVF aquifer to help determine if UEVF groundwater could be used to fill the mine pit.

The test was undertaken by expert hydrogeologists between May and December 2021, with oversight by a Victorian government co-regulator technical working group. A total of 671.9ML was extracted during the test period.

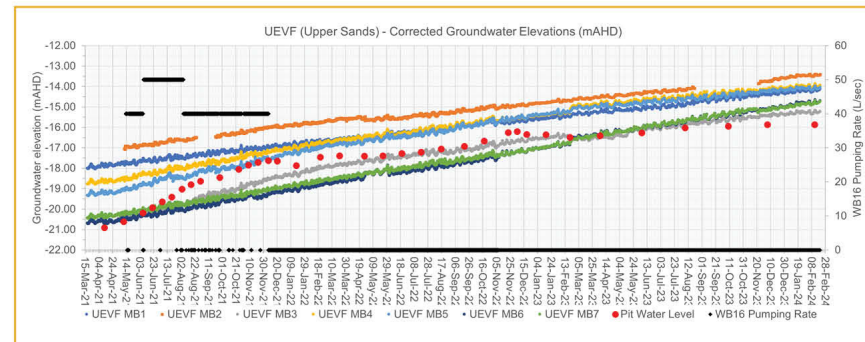
## What did the results demonstrate?

Science-based data collected throughout the process revealed groundwater dependent ecosystems, including the Anglesea River were not adversely impacted as a result of the pumping.

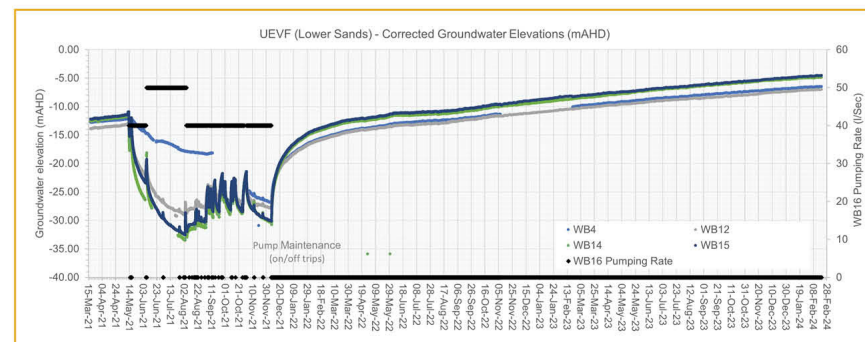
While the groundwater pressure reduced as expected in the UEVF lower sands, there was no impact in the UEVF upper sands or the shallow aquifer systems.



Groundwater level trends in the DBG/PWT aquifer (5-50m) shows response only to natural climate variations and no impact of pumping



Groundwater level (pressure) trends for the upper part of the UEVF aquifer (40-140m) show no impact of pumping



Groundwater level (pressure) trends for the lower part of the UEVF aquifer (200m) show declines as modelled



WB16 pumping bore

UEVF/DBG monitoring bore

Discharge location

# Groundwater Model

## What is it?

The model allows Alcoa to examine how groundwater systems respond to different stressors and predict what may occur under future climate conditions. It is a mathematical estimation of how groundwater flows through rocks and sediments, and provides a forecast range of estimates (called uncertainty) based on running the model hundreds of times using different realistic parameters.

The model was reviewed by the Inter-Agency Group comprising DEECA, SRW and DJPR-ERR, and was supported by a Technical Review Panel consisting of independent experts from a wide range of disciplines including geology, hydrogeology, modelling, geochemistry, and ecology.

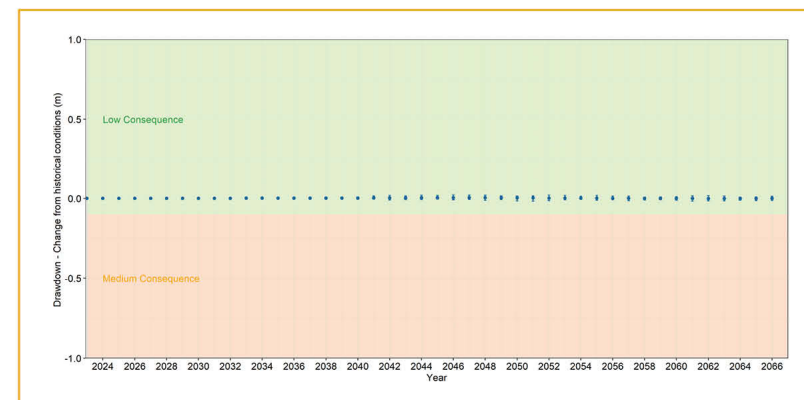
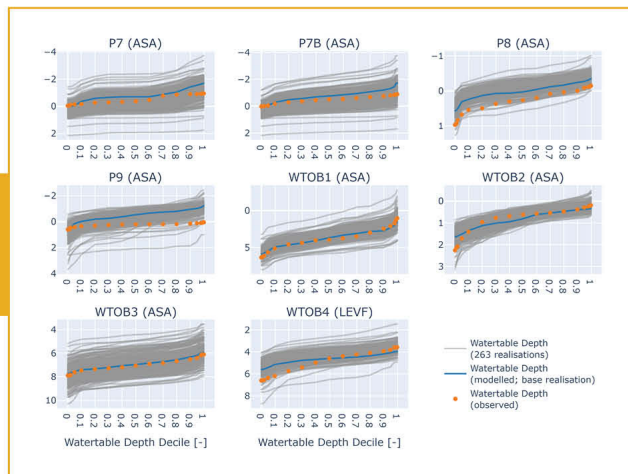
Initial modelling suggests there is a low risk of adverse impacts to groundwater dependent ecosystems, including the Anglesea River.

The model is one of many tools including the hydrogeological model, actual historical data, independent technical studies and groundwater pumping tests, used to help understand potential risks to groundwater dependent ecosystems, including the Anglesea River.

## The model has been developed using:

- Data from more than 140 groundwater monitoring bores
- Data from six stream gauges
- Findings from historic and recent pumping tests
- Long-term climate data
- Recovery data obtained since Alcoa ceased pumping in 2016

Example of model calibration at observation bores



Groundwater level impact (WTOB1 - ASA)

# What a potential application might look like

## Mine water filling strategy figures

Alcoa are considering applying for a licence amendment with Southern Rural Water for the extraction of up to 1.5 gigalitres per year, for approximately 10 years.

Applying the precautionary principle, this is a conservative approach, being less than 40 per cent of the historical extraction rate.

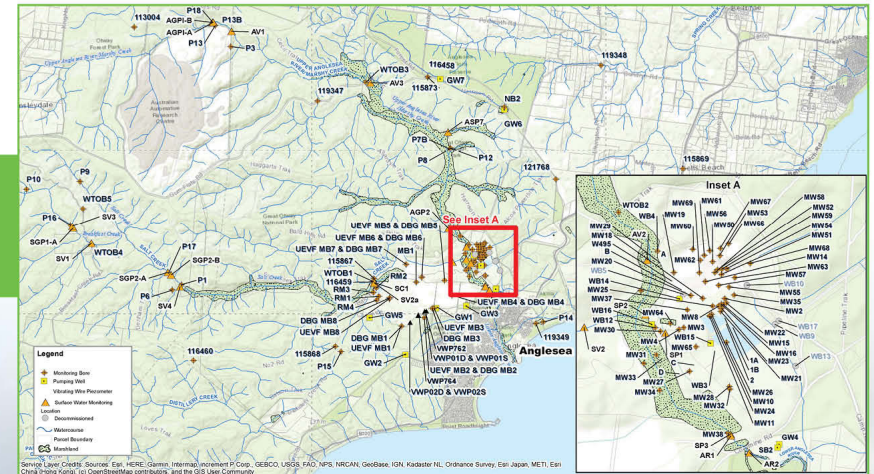
## Mitigating risk

Alcoa would expect any future licence to have specific volume and extraction limits, and a variety of stringent and standard conditions.

To further mitigate any risk to the environment, as part of any application Alcoa would also propose an adaptive management approach which would include:

- A documented water management and monitoring plan
- Ongoing, comprehensive monitoring of all available bores across all aquifers
- Multiple bores (~30) in various aquifers selected as dedicated monitoring and/or trigger bores
- Nominated trigger bores with defined water level and/or water quality triggers and contingency actions (including cessation of extraction) in the event of a trigger exceedance
- Sharing of monitoring results with community and relevant stakeholders

Monitoring infrastructure



2021 pumping test monitoring and trigger bores



# Alcoa's understanding of the river

Anglesea River was originally named Swampy Creek, and was changed in 1884 so as to not discourage tourists from the area<sup>1</sup>.

Salt Creek and Marshy Creek are historically ephemeral waterways - meaning they do not flow all year round, only when the prevailing conditions allow.

Anglesea River has historically seen periods of sustained low flows, including pre-Alcoa in the 1930s and 1950s<sup>1</sup>.

Both Anglesea River catchments have high levels of naturally occurring acid sulphate soils<sup>2</sup>.

The lower Anglesea River appears to have historically acted in a more estuarine fashion than it does today.

In the mid-1960s Alcoa diverted the last two kilometres of Salt Creek around the mine into a clay and concrete lined diversion channel.

During operation Alcoa extracted up to 4 gigalitres per annum and discharged approximately 4.5 ML/day of pH 7 to 8 water into the Anglesea River. During low flow periods, this constituted a major portion, if not 100 per cent of flow inputs to the estuary.

There is an absence of continuous, historical actual river flow and water quality data, and little to no data before 1969.

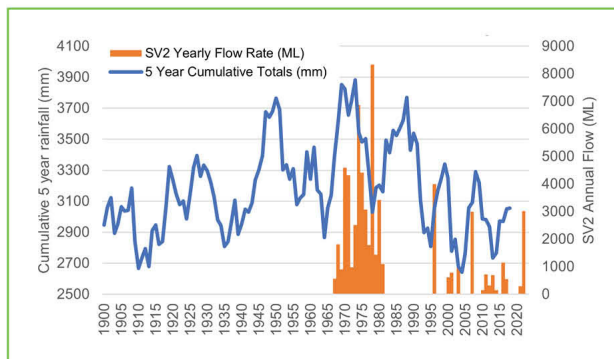
There has been numerous historical attempts to sandbag the mouth of the river, including the creation of a weir wall in 1975, 'to keep the river at a constant level'.

Coogoorah Park was created in 1983 as part of the lower Anglesea River, increasing its volume and adding a potential acid sulphate risk.

The region is going through a long-term drying cycle, using the annual rainfall/deficit versus the long-term average rainfall.

Two of the three driest five-year periods in the last century have occurred since 2006, and the two wettest five-year periods in the 1970s<sup>3</sup>.

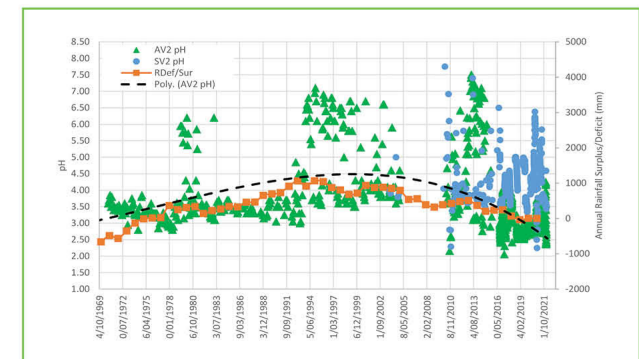
River flow is not just about how much rainfall, but also about when it rains and the prevailing conditions.



Rainfall and surface water relationship



Annual rainfall surplus/deficit<sup>3</sup>

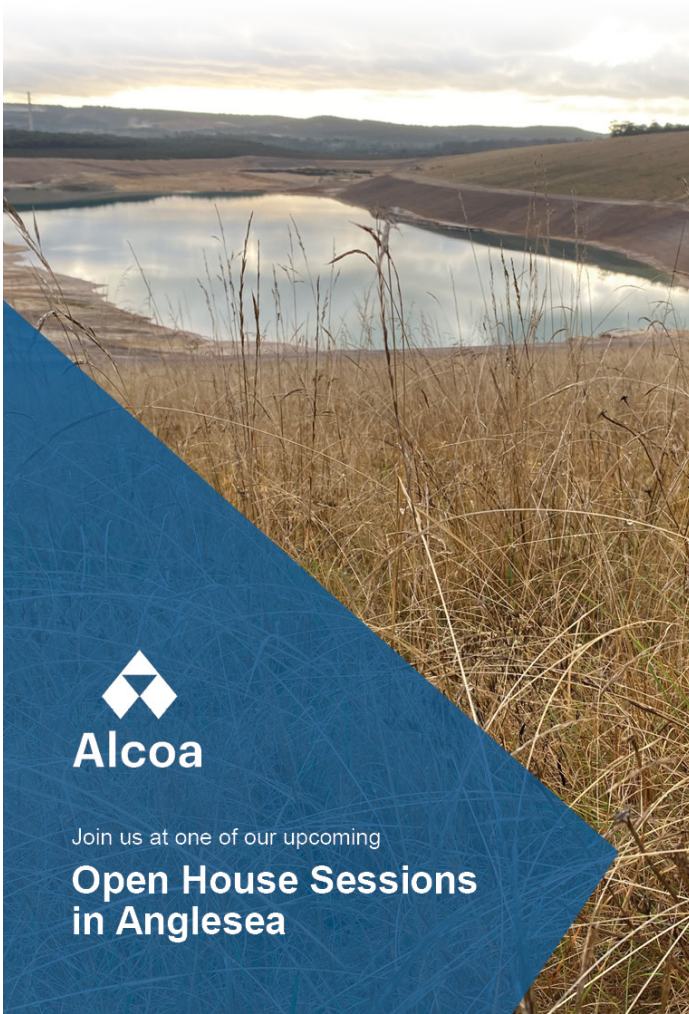


AV2 pH data from 1969

# Appendix 2 | Advertising collateral

## Surf Coast Times advertorial

Published Friday 17 May 2024.



Join us at one of our upcoming  
**Open House Sessions  
in Anglesea**

### Our work exploring the possibility of using groundwater to fill the mine pit within the next decade is nearing completion.

Community members are invited to drop-in to one of three open house sessions, to learn more about the findings from members of our team and technical experts.

The feedback collected during the sessions will be considered when determining if we submit a formal groundwater licence amendment application with Southern Rural Water.

#### Anglesea Bowling Club | 15 Cameron Road, Anglesea

Thursday 23 May	Friday 24 May	Saturday 25 May
4:00pm to 6:00pm	10:00am to 12:00pm	10:00am to 12:00pm

No registration required. Community members are welcome to come and go as they please throughout the time slot.



To contact the team, reach out via [angleseaps@alcoa.com.au](mailto:angleseaps@alcoa.com.au).

To learn more about our work, scan the QR code.

# Alcoa Anglesea Open House Sessions

**Our work exploring the possibility of using groundwater to fill the mine pit within the next decade is nearing completion.**

Community members are invited to drop-in to one of three open house sessions, to learn more about the findings from members of our team and technical experts.

The feedback collected during the sessions will be considered when determining if we submit a formal groundwater licence amendment application with Southern Rural Water.

## Anglesea Bowling Club | 15 Cameron Road, Anglesea

**Thursday 23 May**

4:00pm - 6:00pm

**Friday 24 May**

10:00am - 12:00pm

**Saturday 25 May**

10:00am - 12:00pm

No registration required. Community members are welcome to come and go as they please throughout the two-hour time slot.



To contact the team, reach out via [angleseaps@alcoa.com.au](mailto:angleseaps@alcoa.com.au).

To learn more about our work, scan the QR code.

## Email invitations

Sent to 979 individual Alcoa database subscribers.

Email copy:

**Alcoa will host three open house sessions in Anglesea this month, inviting local community members to hear the latest update on rehabilitation of the former mine and power station sites, and learn about a potential strategy to fill the mine pit.**

*Click the image below to find out more about the sessions being held on Thursday 23, Friday 24 and Saturday 25 May.*



*Image link: <https://sway.cloud.microsoft/qieBQ1ohsjXPvUWs?ref=Link>.*

*If you no longer wish to receive communication material from Alcoa Anglesea, reply unsubscribe to this email.*

Note: Click on the link to visit the dedicated web page visited by 507 individuals.



# Appendix 3 | Facebook and Instagram campaign

## Off-Page Social Media Campaign

### Overview

**Objective:** deliver an off-page targeted social media campaign to drive awareness about the three upcoming open-house community information sessions being hosted in Anglesea over May and June:

- **Campaign objective:** increase awareness about the information sessions
- **Conversation location:** <https://sway.cloud.microsoft/qjeBQ1ohsXPvUWw?ref=Link>
- **Channels and delivery:** deliver across two channels: Alcoa Australia Facebook and Instagram
- Campaign to target selected postcodes from Friday 17 May – Friday 24 May

**Creative:** 3 x animated ads utilising brand campaign imagery

- Water pump imagery
- West wall imagery
- Aerial imagery
- Animated graphics designed to suit all required ad specs for multi-platform ad delivery including feed ads, story/reel ads and right column graphics

**Audience:** Targeting Anglesea postcode

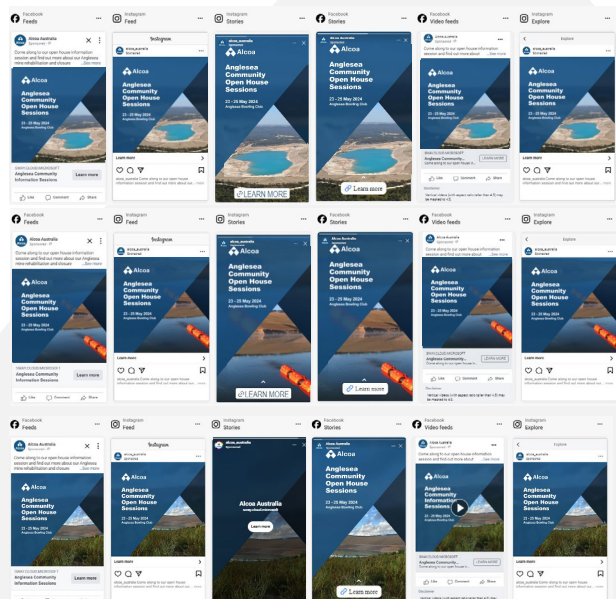
- Anglesea 3230 and Aireys Inlet 3231



## Content placement

### Social media touchpoints and opportunities

- Each advert to be displayed in 21 placements across:
  - Facebook feeds
  - Instagram feeds
  - Facebook marketplace
  - Facebook video feeds
  - Instagram explore
  - Instagram explore home
  - Facebook Business explore
  - Instagram stories
  - Facebook stories
  - Instagram reels
  - Facebook reels
  - Facebook in-stream for Videos
  - Facebook Ads on Facebook Reels
  - Instagram Ads on Instagram Reels
  - Facebook Search results
  - Instagram Search results
  - Audience Network: native, banner and interstitial (apps and sites)



## Ad results - summary

### Off-page campaign performance overview

- The off-page campaign had a performance target to ensure it met the main goal of boosting awareness of Alcoa's Anglesea Community Open Sessions:
  - **Performance goal:** maximising total reach and number of impressions of ads
- The campaign, made up of three ad sets targeting the specified postcodes Anglesea 3230 and Aireys Inlet 3231
- In total, the campaign received close to 14,000 impressions, and reached an audience of just over 3,800. This a strong result considering the total audience size of the campaign sit within 5,000 – 5,300.

METRIC	RESULTS
<b>Reach</b> <i>Number of accounts/users who saw content at least once.</i>	3,819
<b>Frequency</b> <i>The average number of times each account saw your ad.</i>	2.8
<b>Impressions</b> <i>Number of times your ads were on screen.</i>	13,945
<b>All Clicks</b> <i>The number of clicks, taps or swipes on your ads.</i>	103
<b>Link Clicks</b> <i>The number of clicks, taps or swipes within the ad that led to advertiser-specified destinations</i>	32
<b>Engagements</b> <i>Number of actions people take involving ad.</i>	732

## Ad results - audience

### Off-page campaign gender breakdown

Gender breakdown			
	Reach	Impressions	Engagements
Male	2,100	7,810	395
Female	1,681	5,996	330
Uncategorised	38	139	7

Age breakdown			
	Reach	Impressions	Engagements
18-24	840	3,207	102
25-34	954	3,765	95
35-44	575	1952	124
45-54	458	1813	118
55-64	496	1674	117
65+	496	1534	176

### Findings

- The campaign was well-received by both the male and female audiences. The budget optimisation tool prompted an increase in budget allocation to the male-owned accounts to effectively hit the 'reach' targets set for this campaign
- Findings are a true reflection of current Facebook user statistics (as of January 2024 via Statista) with men between the ages of 25 and 34 years making up the largest audience (20%)
- Interesting to note that users between the ages of 25 and 34 saw the campaign the most but those in the 65+ age bracket were the most engaged. This reflects the Australian Bureau of Statistics population census results of Anglesea that details people between the ages of 60 to 80 make up the largest portion

# Appendix 4 | Completed feedback forms

---

Names and identifying information have been redacted for privacy purposes.

# Alcoa Anglesea Open House Sessions

## Community and Stakeholder Feedback Questionnaire

Has this session helped you to better understand the Anglesea Mine Rehabilitation and Closure Plan?

Yes  No

Has this session informed you about what viable options there are to fill the mine pit?

Yes  No

Is there any additional information you'd like to learn about the potential strategy to fill the mine pit, or in regards to the Anglesea Mine Rehabilitation and Closure Plan?

- What will happen to the freehold land.

# Alcoa Anglesea Open House Sessions

2

## Community and Stakeholder Feedback Questionnaire

Has this session helped you to better understand the Anglesea Mine Rehabilitation and Closure Plan?

Yes  No

Has this session informed you about what viable options there are to fill the mine pit?

Yes  No

Is there any additional information you'd like to learn about the potential strategy to fill the mine pit, or in regards to the Anglesea Mine Rehabilitation and Closure Plan?

- ① Despite the huge effort obviously made it is still difficult for even informed locals to understand.
- ② The complexities & variables are huge.
- ③ I believe most residents who bother to come really want to know only "how can we have our river back to health". Alcoa seems from this to be saying its the river is a separate issue from the filling of the pit.

# Alcoa Anglesea Open House Sessions

3

## Community and Stakeholder Feedback Questionnaire


Has this session helped you to better understand the Anglesea Mine Rehabilitation and Closure Plan?

Yes  No *A little.*

Has this session informed you about what viable options there are to fill the mine pit?

Yes  No

Is there any additional information you'd like to learn about the potential strategy to fill the mine pit, or in regards to the Anglesea Mine Rehabilitation and Closure Plan?

 I found the information well presented but difficult to understand as it is very complex and ~~is~~ a lot to take in.

I'll read up and try to absorb the information (I took photos)

# Alcoa Anglesea Open House Sessions

## Community and Stakeholder Feedback Questionnaire

Has this session helped you to better understand the Anglesea Mine Rehabilitation and Closure Plan?

Yes  No

Has this session informed you about what viable options there are to fill the mine pit?

Yes  No

Is there any additional information you'd like to learn about the potential strategy to fill the mine pit, or in regards to the Anglesea Mine Rehabilitation and Closure Plan?

Opportunities galore, well presented & supported.

# Alcoa Anglesea Open House Sessions

## Community and Stakeholder Feedback Questionnaire

Has this session helped you to better understand the Anglesea Mine Rehabilitation and Closure Plan?

Yes     No

Has this session informed you about what viable options there are to fill the mine pit?

Yes     No

Is there any additional information you'd like to learn about the potential strategy to fill the mine pit, or in regards to the Anglesea Mine Rehabilitation and Closure Plan?

.....

.....

.....

.....

.....

.....

.....

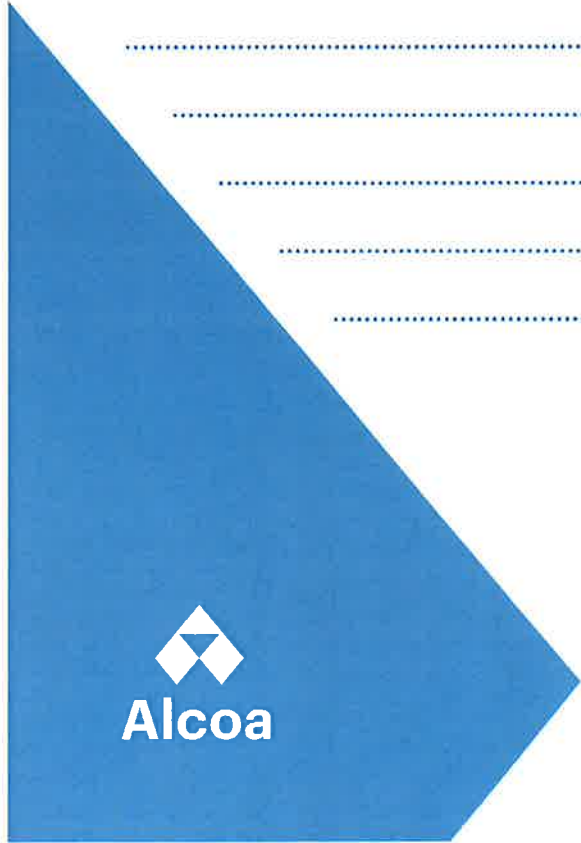
.....

.....

.....

.....

.....





# Alcoa Anglesea Open House Sessions

6

## Community and Stakeholder Feedback Questionnaire

Has this session helped you to better understand the Anglesea Mine Rehabilitation and Closure Plan?

Yes  No

Has this session informed you about what viable options there are to fill the mine pit?

Yes  No

Is there any additional information you'd like to learn about the potential strategy to fill the mine pit, or in regards to the Anglesea Mine Rehabilitation and Closure Plan?

Maybe access to the list of plants being used for revegetation - of interest to Gordon students.  
Love to see more before / after images as I think you are doing a great job!

# Alcoa Anglesea Open House Sessions

7

## Community and Stakeholder Feedback Questionnaire

Has this session helped you to better understand the Anglesea Mine Rehabilitation and Closure Plan?

Yes  No

Has this session informed you about what viable options there are to fill the mine pit?

Yes  No

Is there any additional information you'd like to learn about the potential strategy to fill the mine pit, or in regards to the Anglesea Mine Rehabilitation and Closure Plan?

- Potential uses for the site post closure & filling of mine pit. Alcoa/Government plans for utilisation post fill.

- How could ~~a~~ local education providers be involved along the way. Opportunities for collaboration or tours/visits.



Alcoa

# Alcoa Anglesea Open House Sessions

## Community and Stakeholder Feedback Questionnaire

Has this session helped you to better understand the Anglesea Mine Rehabilitation and Closure Plan?

Yes     No

Has this session informed you about what viable options there are to fill the mine pit?

Yes     No

Is there any additional information you'd like to learn about the potential strategy to fill the mine pit, or in regards to the Anglesea Mine Rehabilitation and Closure Plan?

No feedback but verbatim:

"I feel like you guys know more about this than I do and I'm a local." "I'm just interested to see what's happening."

# Alcoa Anglesea Open House Sessions

## Community and Stakeholder Feedback Questionnaire

Has this session helped you to better understand the Anglesea Mine Rehabilitation and Closure Plan?

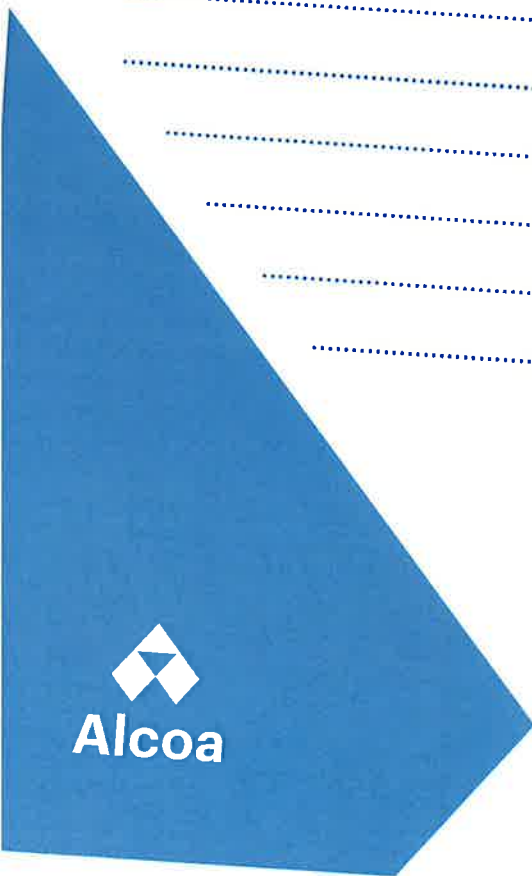
Yes     No

Has this session informed you about what viable options there are to fill the mine pit?

Yes     No

Is there any additional information you'd like to learn about the potential strategy to fill the mine pit, or in regards to the Anglesea Mine Rehabilitation and Closure Plan?

- Would like to stay in touch  
- Well presented



# Alcoa Anglesea Open House Sessions

## Community and Stakeholder Feedback Questionnaire

Has this session helped you to better understand the Anglesea Mine Rehabilitation and Closure Plan?

Yes     No

Has this session informed you about what viable options there are to fill the mine pit?

Yes     No

Is there any additional information you'd like to learn about the potential strategy to fill the mine pit, or in regards to the Anglesea Mine Rehabilitation and Closure Plan?

*No more than you are providing.  
Thank you.*

.....

.....

.....

.....

.....

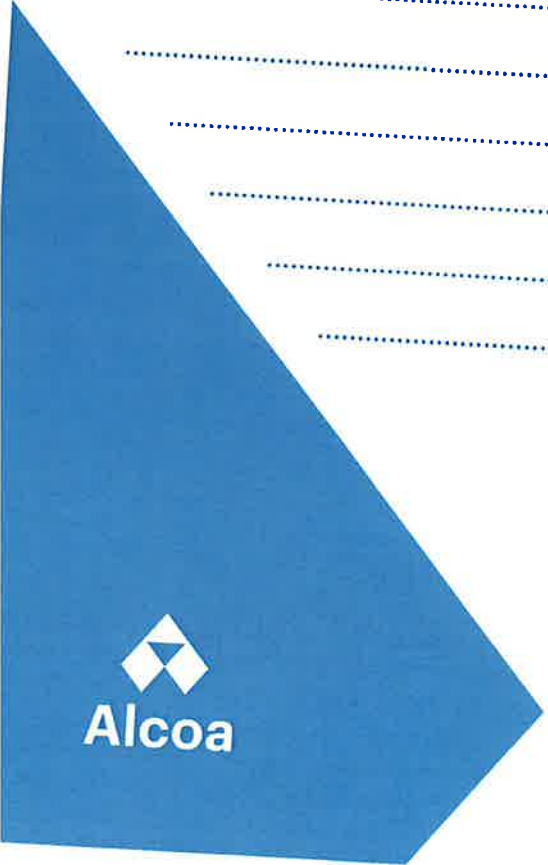
.....

.....

.....

.....

.....



# Alcoa Anglesea Open House Sessions

## Community and Stakeholder Feedback Questionnaire

Has this session helped you to better understand the Anglesea Mine Rehabilitation and Closure Plan?

Yes  No

Has this session informed you about what viable options there are to fill the mine pit?

Yes  No

Is there any additional information you'd like to learn about the potential strategy to fill the mine pit, or in regards to the Anglesea Mine Rehabilitation and Closure Plan?

No.

Over the years since the mid 1960's I have supported everything Alcoa has done for the town.

From employment of locals to support of almost all local clubs and organisations <sup>around town</sup> in the form of donations.

Their commitment to rehabilitation of the mine site to demolition of power station and the ongoing attention to water mine filling, reshaping the mine and maintaining the nature drainage has been commendable.



Alcoa

# Alcoa Anglesea Open House Sessions

## Community and Stakeholder Feedback Questionnaire

Has this session helped you to better understand the Anglesea Mine Rehabilitation and Closure Plan?

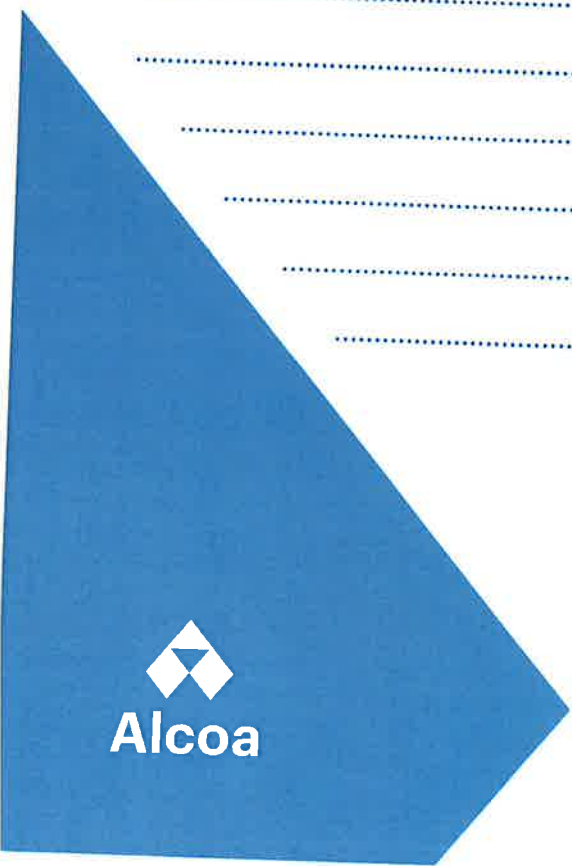
Yes     No

Has this session informed you about what viable options there are to fill the mine pit?

Yes     No

Is there any additional information you'd like to learn about the potential strategy to fill the mine pit, or in regards to the Anglesea Mine Rehabilitation and Closure Plan?

.....  
- Happy with the info about the river history.  
.....  
.....  
.....  
.....  
.....  
.....  
.....  
.....



# Alcoa Anglesea Open House Sessions

## Community and Stakeholder Feedback Questionnaire

Has this session helped you to better understand the Anglesea Mine Rehabilitation and Closure Plan?

Yes  No

Has this session informed you about what viable options there are to fill the mine pit?

Yes  No

Is there any additional information you'd like to learn about the potential strategy to fill the mine pit, or in regards to the Anglesea Mine Rehabilitation and Closure Plan?

How will you manage to convince the many different groups of residents to allow this? There appears to be a number of groups opposing any change! Each group has a different opinion on water issues - many ill informed.

.....  
.....  
.....  
.....





# Alcoa Anglesea Open House Sessions

## Community and Stakeholder Feedback Questionnaire

Has this session helped you to better understand the Anglesea Mine Rehabilitation and Closure Plan?

Yes  No

Has this session informed you about what viable options there are to fill the mine pit?

Yes  No

Is there any additional information you'd like to learn about the potential strategy to fill the mine pit, or in regards to the Anglesea Mine Rehabilitation and Closure Plan?

The session is most informative and gave insight into viable future options. The staff are open to questions and have the knowledge needed to help the public understand the history and the future of the mine in Anglesea.

.....  
.....  
.....



Alcoa

# Alcoa Anglesea Open House Sessions

## Community and Stakeholder Feedback Questionnaire

Has this session helped you to better understand the Anglesea Mine Rehabilitation and Closure Plan?

Yes     No

Has this session informed you about what viable options there are to fill the mine pit?

Yes     No    *Insufficient info about options.*

Is there any additional information you'd like to learn about the potential strategy to fill the mine pit, or in regards to the Anglesea Mine Rehabilitation and Closure Plan?

*Overall, very clearly presented.  
Thanks.*

*"It's far more complex than I can understand"*



# Alcoa Anglesea Open House Sessions

## Community and Stakeholder Feedback Questionnaire

Has this session helped you to better understand the Anglesea Mine Rehabilitation and Closure Plan?

Yes  No

Has this session informed you about what viable options there are to fill the mine pit?

Yes  No not sure there were many other viable options

Is there any additional information you'd like to learn about the potential strategy to fill the mine pit, or in regards to the Anglesea Mine Rehabilitation and Closure Plan?

- Just a viable option - the professional expertise has said this will be the way to benefit.

- Interested in Eden Project or if there are viable alternatives.

- What progress to make sure water is provided that has the right impact.

- Why do you want water - not soil.



Alcoa

# Alcoa Anglesea Open House Sessions

## Community and Stakeholder Feedback Questionnaire

Has this session helped you to better understand the Anglesea Mine Rehabilitation and Closure Plan?

Yes     No

Has this session informed you about what viable options there are to fill the mine pit?

Yes     No

Is there any additional information you'd like to learn about the potential strategy to fill the mine pit, or in regards to the Anglesea Mine Rehabilitation and Closure Plan?

- Not at this stage
- block of land for housing.
- Interested in Eden Project.

.....

.....

.....

.....



# Alcoa Anglesea Open House Sessions

## Community and Stakeholder Feedback Questionnaire

Has this session helped you to better understand the Anglesea Mine Rehabilitation and Closure Plan?

Yes     No

Has this session informed you about what viable options there are to fill the mine pit?

Yes     No

Is there any additional information you'd like to learn about the potential strategy to fill the mine pit, or in regards to the Anglesea Mine Rehabilitation and Closure Plan?

- Displays really good - balance of technical + well explained.

- Good doing these sessions to get buy in from community.



# Alcoa Anglesea Open House Sessions

## Community and Stakeholder Feedback Questionnaire

Has this session helped you to better understand the Anglesea Mine Rehabilitation and Closure Plan?

Yes  No

Has this session informed you about what viable options there are to fill the mine pit?

Yes  No

Is there any additional information you'd like to learn about the potential strategy to fill the mine pit, or in regards to the Anglesea Mine Rehabilitation and Closure Plan?

"Why do we need to fill it up?"

"If there is a good reason, it seems like water <sup>already</sup> creates the geostability"

"We may not understand future impacts" "risky"



Alcoa

# Alcoa Anglesea Open House Sessions

## Community and Stakeholder Feedback Questionnaire

Has this session helped you to better understand the Anglesea Mine Rehabilitation and Closure Plan?

Yes     No

Has this session informed you about what viable options there are to fill the mine pit?

Yes     No

Is there any additional information you'd like to learn about the potential strategy to fill the mine pit, or in regards to the Anglesea Mine Rehabilitation and Closure Plan?

Surf Coast Times article prompted visit

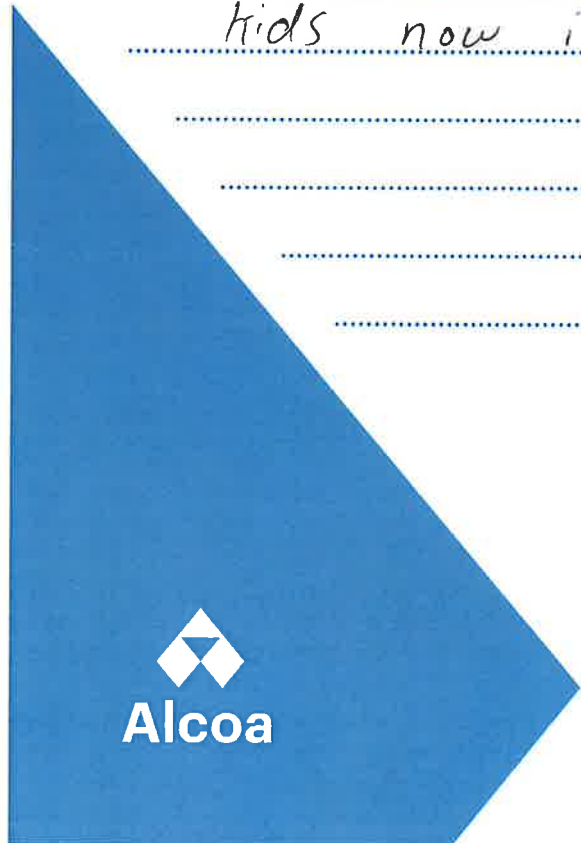
"Biggest concern is the river, used to be able to catch a fish with the kids now it's dead"

.....

.....

.....

.....



# Alcoa Anglesea Open House Sessions

21

## Community and Stakeholder Feedback Questionnaire

Has this session helped you to better understand the Anglesea Mine Rehabilitation and Closure Plan?

Yes  No

Has this session informed you about what viable options there are to fill the mine pit?

Yes  No

Is there any additional information you'd like to learn about the potential strategy to fill the mine pit, or in regards to the Anglesea Mine Rehabilitation and Closure Plan?

"People seem very knowledgeable"



# Alcoa Anglesea Open House Sessions

22

## Community and Stakeholder Feedback Questionnaire

Has this session helped you to better understand the Anglesea Mine Rehabilitation and Closure Plan?

Yes  No

Has this session informed you about what viable options there are to fill the mine pit?

Yes  No

Is there any additional information you'd like to learn about the potential strategy to fill the mine pit, or in regards to the Anglesea Mine Rehabilitation and Closure Plan?

- "How can we fill it quicker"
- Found it so fascinating, how much water there is under there.
- If people understand how much water there is underground it will help them understand.

# Alcoa Anglesea Open House Sessions

## Community and Stakeholder Feedback Questionnaire

Has this session helped you to better understand the Anglesea Mine Rehabilitation and Closure Plan?

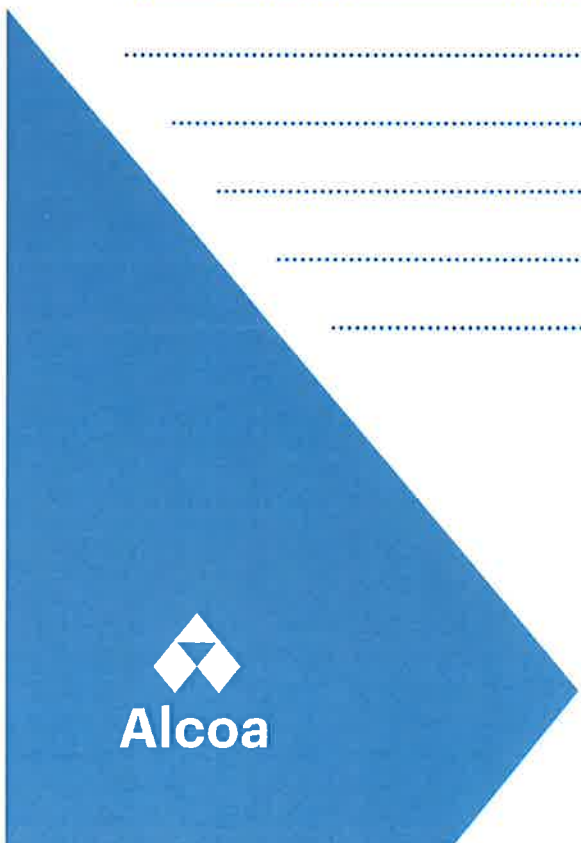
Yes     No

Has this session informed you about what viable options there are to fill the mine pit?

Yes     No

Is there any additional information you'd like to learn about the potential strategy to fill the mine pit, or in regards to the Anglesea Mine Rehabilitation and Closure Plan?

Preferred option is natural filling.  
Alcoa doing a good job.



# Alcoa Anglesea Open House Sessions

## Community and Stakeholder Feedback Questionnaire

Has this session helped you to better understand the Anglesea Mine Rehabilitation and Closure Plan?

Yes     No

Has this session informed you about what viable options there are to fill the mine pit?

Yes     No

Is there any additional information you'd like to learn about the potential strategy to fill the mine pit, or in regards to the Anglesea Mine Rehabilitation and Closure Plan?

Not at this stage.

"Very informative"

# Alcoa Anglesea Open House Sessions

## Community and Stakeholder Feedback Questionnaire

Has this session helped you to better understand the Anglesea Mine Rehabilitation and Closure Plan?

Yes  No

Has this session informed you about what viable options there are to fill the mine pit?

Yes  No *to an extent*

Is there any additional information you'd like to learn about the potential strategy to fill the mine pit, or in regards to the Anglesea Mine Rehabilitation and Closure Plan?

*I would love to participate  
in a site tour!*

# Alcoa Anglesea Open House Sessions

## Community and Stakeholder Feedback Questionnaire

Has this session helped you to better understand the Anglesea Mine Rehabilitation and Closure Plan?

Yes  No

Has this session informed you about what viable options there are to fill the mine pit?

Yes  No

Is there any additional information you'd like to learn about the potential strategy to fill the mine pit, or in regards to the Anglesea Mine Rehabilitation and Closure Plan?

Lodging forward for a tour of the area

.....

.....

.....

.....

.....

.....

.....

.....

.....



# Alcoa Anglesea Open House Sessions

## Community and Stakeholder Feedback Questionnaire

Has this session helped you to better understand the Anglesea Mine Rehabilitation and Closure Plan?

Yes     No

Has this session informed you about what viable options there are to fill the mine pit?

Yes     No

Is there any additional information you'd like to learn about the potential strategy to fill the mine pit, or in regards to the Anglesea Mine Rehabilitation and Closure Plan?

Update on Eden's progress & interest

"As Mr. Nike says, 'Just do it!'"



# Alcoa Anglesea Open House Sessions

## Community and Stakeholder Feedback Questionnaire

Has this session helped you to better understand the Anglesea Mine Rehabilitation and Closure Plan?

Yes     No

Has this session informed you about what viable options there are to fill the mine pit?

Yes     No

Is there any additional information you'd like to learn about the potential strategy to fill the mine pit, or in regards to the Anglesea Mine Rehabilitation and Closure Plan?

*Yes I would like more information on filling the mine pit and the risks involved.*

.....

.....

.....

.....

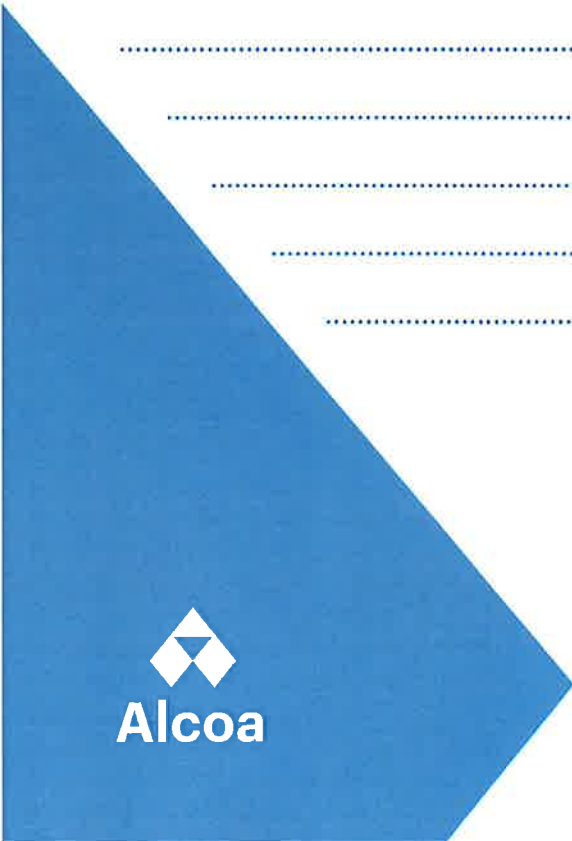
.....

.....

.....

.....

.....



# Alcoa Anglesea Open House Sessions

## Community and Stakeholder Feedback Questionnaire

Has this session helped you to better understand the Anglesea Mine Rehabilitation and Closure Plan?

Yes     No

Has this session informed you about what viable options there are to fill the mine pit?

Yes     No

Is there any additional information you'd like to learn about the potential strategy to fill the mine pit, or in regards to the Anglesea Mine Rehabilitation and Closure Plan?

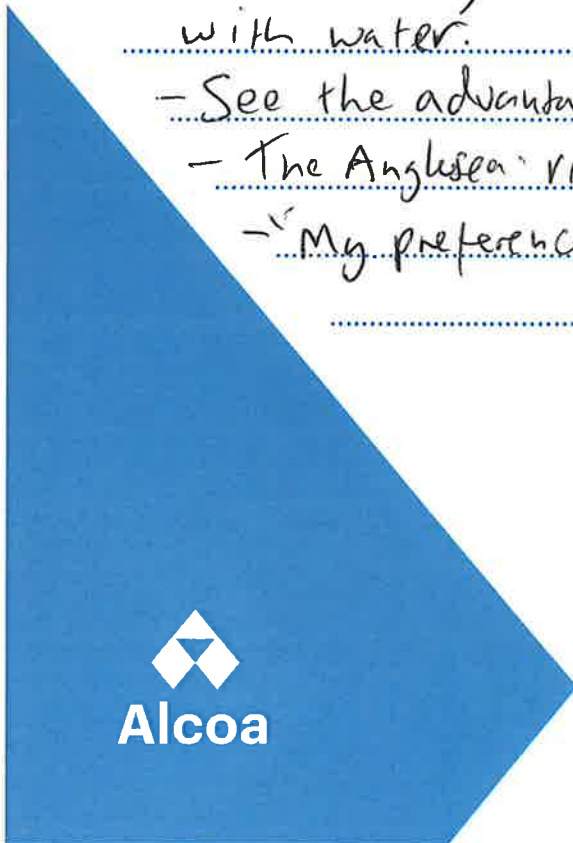
- Two options - natural or not.  
I thought you had finalised plans.

- Not sure why you're so anxious about filling it with water.

- See the advantages for fire

- The Anglesea river is in quite a dire situation.

- "My preference would be to let it fill naturally."





# Alcoa Anglesea Open House Sessions

## Community and Stakeholder Feedback Questionnaire

Has this session helped you to better understand the Anglesea Mine Rehabilitation and Closure Plan?

Yes     No

Has this session informed you about what viable options there are to fill the mine pit?

Yes     No

Is there any additional information you'd like to learn about the potential strategy to fill the mine pit, or in regards to the Anglesea Mine Rehabilitation and Closure Plan?

- Recycled water + Sewerage. - Quality of the water from the Anglsten sewage plant. Could that be used.



# Alcoa Anglesea Open House Sessions

## Community and Stakeholder Feedback Questionnaire

Has this session helped you to better understand the Anglesea Mine Rehabilitation and Closure Plan?

Yes     No

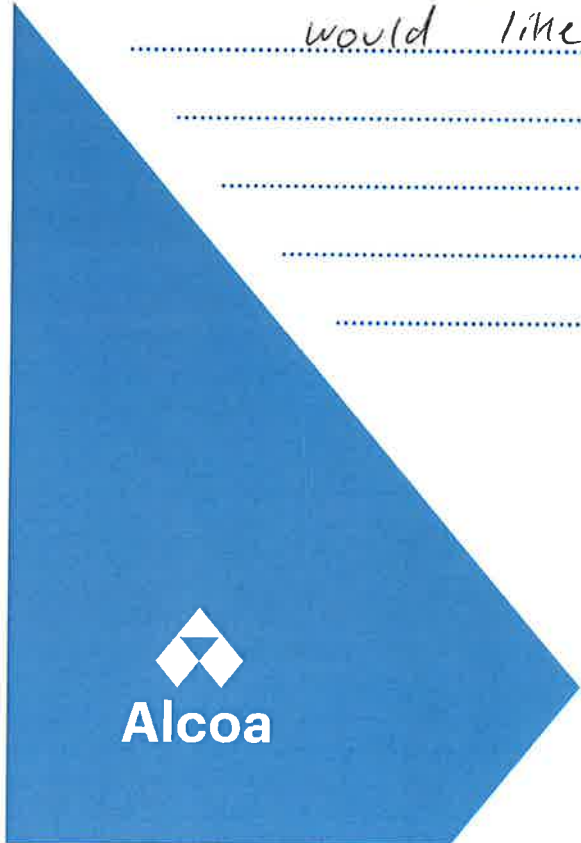
Has this session informed you about what viable options there are to fill the mine pit?

Yes     No

Is there any additional information you'd like to learn about the potential strategy to fill the mine pit, or in regards to the Anglesea Mine Rehabilitation and Closure Plan?

"Much more technical than I thought it would be"

"Would like to see more of a timeline... would like to see more progression too."



# Alcoa Anglesea Open House Sessions

## Community and Stakeholder Feedback Questionnaire

Has this session helped you to better understand the Anglesea Mine Rehabilitation and Closure Plan?

Yes     No

Has this session informed you about what viable options there are to fill the mine pit?

Yes     No

Is there any additional information you'd like to learn about the potential strategy to fill the mine pit, or in regards to the Anglesea Mine Rehabilitation and Closure Plan?

No.

.....

.....

.....

.....

.....

.....

.....

.....

.....

.....

.....



# Alcoa Anglesea Open House Sessions

## Community and Stakeholder Feedback Questionnaire

Has this session helped you to better understand the Anglesea Mine Rehabilitation and Closure Plan?

Yes     No

Has this session informed you about what viable options there are to fill the mine pit?

Yes     No

Is there any additional information you'd like to learn about the potential strategy to fill the mine pit, or in regards to the Anglesea Mine Rehabilitation and Closure Plan?

- where in the plan it says it needs to be filled. Is it mandatory and walk away



# Alcoa Anglesea Open House Sessions

## Community and Stakeholder Feedback Questionnaire

Has this session helped you to better understand the Anglesea Mine Rehabilitation and Closure Plan?

Yes  No

Has this session informed you about what viable options there are to fill the mine pit?

Yes  No

Is there any additional information you'd like to learn about the potential strategy to fill the mine pit, or in regards to the Anglesea Mine Rehabilitation and Closure Plan?

~~- Alcoa's plan filling with water view work - risk + pps on all 3.~~

- In relation to the environmental impact assessment of "Galcappa" + Anglesea river health - the interaction of all three.



Alcoa

# Alcoa Anglesea Open House Sessions

## Community and Stakeholder Feedback Questionnaire

Has this session helped you to better understand the Anglesea Mine Rehabilitation and Closure Plan?

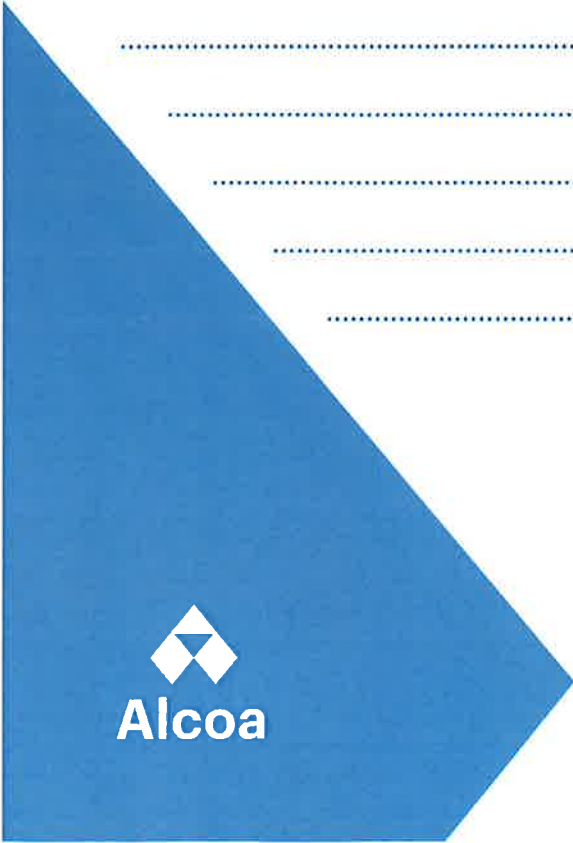
Yes     No

Has this session informed you about what viable options there are to fill the mine pit?

Yes     No

Is there any additional information you'd like to learn about the potential strategy to fill the mine pit, or in regards to the Anglesea Mine Rehabilitation and Closure Plan?

-----  
- Good overall  
- More interested in the Eden Project  
-----  
-----  
-----  
-----  
-----  
-----  
-----  
-----  
-----



# Alcoa Anglesea Open House Sessions

## Community and Stakeholder Feedback Questionnaire

Has this session helped you to better understand the Anglesea Mine Rehabilitation and Closure Plan?

Yes     No

Has this session informed you about what viable options there are to fill the mine pit?

Yes     No

Is there any additional information you'd like to learn about the potential strategy to fill the mine pit, or in regards to the Anglesea Mine Rehabilitation and Closure Plan?

.....  
- *Also Good overall*  
- *Would like more info on Eden Project update*  
.....  
.....  
.....  
.....  
.....  
.....



# Alcoa Anglesea Open House Sessions

## Community and Stakeholder Feedback Questionnaire

Has this session helped you to better understand the Anglesea Mine Rehabilitation and Closure Plan?

Yes

No

"to a degree quite technical"

Has this session informed you about what viable options there are to fill the mine pit?

Yes

No

Is there any additional information you'd like to learn about the potential strategy to fill the mine pit, or in regards to the Anglesea Mine Rehabilitation and Closure Plan?

"greater understanding, simpler language"

"corporate speak"

"interested in the certification of the river" - also the general health of it

"communication has felt a bit convoluted"

"would like to know more about the Eden Project, we know it's not going to be as good, we also want to know how it would impact the community e.g. housing, traffic, roads, environment."

"how is putting the water in there going to rehabilitate the land which has been so degraded"



# Alcoa Anglesea Open House Sessions

## Community and Stakeholder Feedback Questionnaire

Has this session helped you to better understand the Anglesea Mine Rehabilitation and Closure Plan?

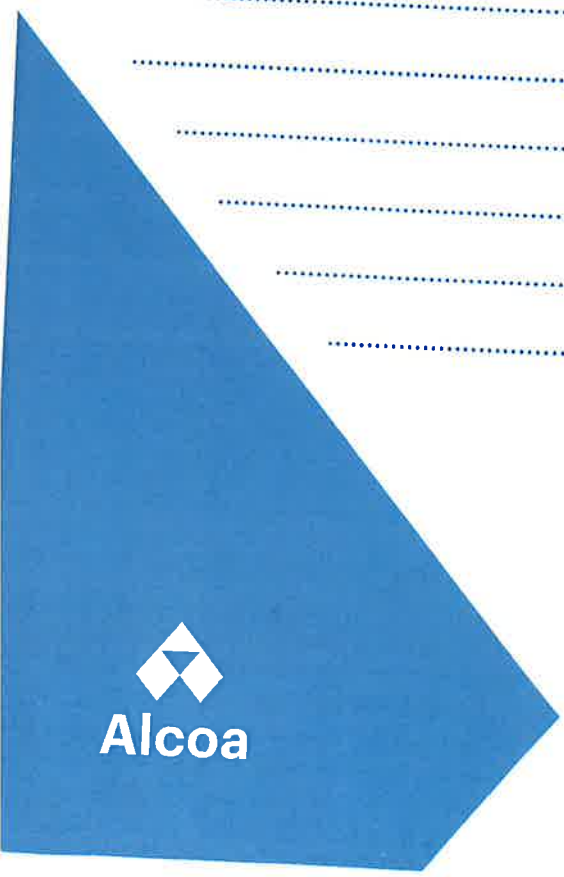
Yes    No   "a bit"

Has this session informed you about what viable options there are to fill the mine pit?

Yes    No

Is there any additional information you'd like to learn about the potential strategy to fill the mine pit, or in regards to the Anglesea Mine Rehabilitation and Closure Plan?

Interested in the use of the land  
.....  
.....  
.....  
.....  
.....  
.....  
.....  
.....  
.....  
.....  
.....



# Alcoa Anglesea Open House Sessions

## Community and Stakeholder Feedback Questionnaire

Has this session helped you to better understand the Anglesea Mine Rehabilitation and Closure Plan?

Yes     No

Has this session informed you about what viable options there are to fill the mine pit?

Yes     No

Is there any additional information you'd like to learn about the potential strategy to fill the mine pit, or in regards to the Anglesea Mine Rehabilitation and Closure Plan?

- No - A bit too complex

.....

.....

.....

.....

.....

.....

.....

.....

.....

.....



# Alcoa Anglesea Open House Sessions

## Community and Stakeholder Feedback Questionnaire

Has this session helped you to better understand the Anglesea Mine Rehabilitation and Closure Plan?

Yes  No - already knows about plans

Has this session informed you about what viable options there are to fill the mine pit?

Yes  No - doesn't agree with it

Is there any additional information you'd like to learn about the potential strategy to fill the mine pit, or in regards to the Anglesea Mine Rehabilitation and Closure Plan?

"doesn't understand why Alcoa wants to fill so quickly"

"don't like Eder Project, doesn't want it to be turned into hotels & conference centres"

"no benefits for Anglesea Community"

~~\*~~ didn't look at boards,  
back

# Alcoa Anglesea Open House Sessions

## Community and Stakeholder Feedback Questionnaire

Has this session helped you to better understand the Anglesea Mine Rehabilitation and Closure Plan?

- Yes
- No

Has this session informed you about what viable options there are to fill the mine pit?

- Yes
- No

Is there any additional information you'd like to learn about the potential strategy to fill the mine pit, or in regards to the Anglesea Mine Rehabilitation and Closure Plan?

the aquifer should only be used again if there is NO RISK rather than low RISK of adverse impacts on the river.

.....

.....

.....

.....

.....



# Alcoa Anglesea Open House Sessions

## Community and Stakeholder Feedback Questionnaire

Has this session helped you to better understand the Anglesea Mine Rehabilitation and Closure Plan?

Yes  No - already informed

Has this session informed you about what viable options there are to fill the mine pit?

Yes  No opportunity to see all the detail

Is there any additional information you'd like to learn about the potential strategy to fill the mine pit, or in regards to the Anglesea Mine Rehabilitation and Closure Plan?

"attends a lot community information sessions"  
"to understand the data is something we'd like but we'd need an ~~engineer~~ engineer but it's difficult"



# Alcoa Anglesea Open House Sessions

## Community and Stakeholder Feedback Questionnaire

Has this session helped you to better understand the Anglesea Mine Rehabilitation and Closure Plan?

Yes  No

Has this session informed you about what viable options there are to fill the mine pit?

Yes  No

Is there any additional information you'd like to learn about the potential strategy to fill the mine pit, or in regards to the Anglesea Mine Rehabilitation and Closure Plan?

"Concerned that nobody can guarantee the impacts ~~to the~~ of the groundwater extraction"

"Why not let nature fix it up, if it rains it will fill"

"Can't see a problem with the mine taking a long time"

"I've never read anything ~~a~~ solid about the Eden project - all seems a bit 'hollywood'."

# Alcoa Anglesea Open House Sessions

## Community and Stakeholder Feedback Questionnaire

Has this session helped you to better understand the Anglesea Mine Rehabilitation and Closure Plan?

Yes  No

Has this session informed you about what viable options there are to fill the mine pit?

Yes  No

Is there any additional information you'd like to learn about the potential strategy to fill the mine pit, or in regards to the Anglesea Mine Rehabilitation and Closure Plan?

- Did consider pump hydro.
- Cooling pond power system - doesn't need a huge drop.
- Has anyone considered building a hydroelectric dam?

# Alcoa Anglesea Open House Sessions

## Community and Stakeholder Feedback Questionnaire

Has this session helped you to better understand the Anglesea Mine Rehabilitation and Closure Plan?

Yes     No

Has this session informed you about what viable options there are to fill the mine pit?

Yes     No

Is there any additional information you'd like to learn about the potential strategy to fill the mine pit, or in regards to the Anglesea Mine Rehabilitation and Closure Plan?

.....

.....

.....

.....

.....

.....

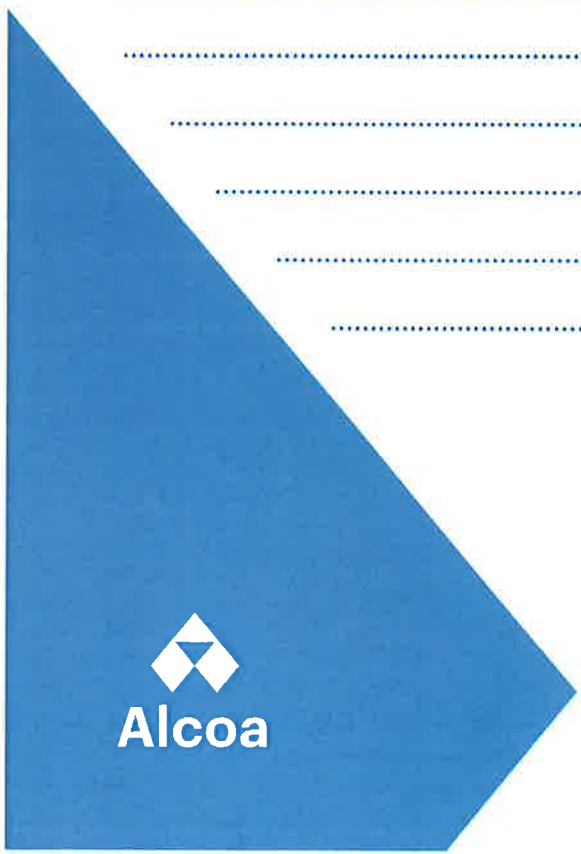
.....

.....

.....

.....

.....





# Alcoa Anglesea Open House Sessions

## Community and Stakeholder Feedback Questionnaire

Has this session helped you to better understand the Anglesea Mine Rehabilitation and Closure Plan?

Yes  No *Maybe*

Has this session informed you about what viable options there are to fill the mine pit?

Yes  No *Maybe. Don't understand other than Alcoa's position.*

Is there any additional information you'd like to learn about the potential strategy to fill the mine pit, or in regards to the Anglesea Mine Rehabilitation and Closure Plan?

*- Would need to understand what I do and don't know*



Alcoa

# Alcoa Anglesea Open House Sessions

## Community and Stakeholder Feedback Questionnaire

Has this session helped you to better understand the Anglesea Mine Rehabilitation and Closure Plan?

Yes  No

Has this session informed you about what viable options there are to fill the mine pit?

Yes  No

Is there any additional information you'd like to learn about the potential strategy to fill the mine pit, or in regards to the Anglesea Mine Rehabilitation and Closure Plan?

"Appreciative of today's session, the community is very concerned about the health of the river, how well the flow is impacted it?"

.....  
.....  
.....  
.....



Alcoa

# Alcoa Anglesea Open House Sessions

48

## Community and Stakeholder Feedback Questionnaire

Has this session helped you to better understand the Anglesea Mine Rehabilitation and Closure Plan?

Yes  No

Has this session informed you about what viable options there are to fill the mine pit?

Yes  No

Is there any additional information you'd like to learn about the potential strategy to fill the mine pit, or in regards to the Anglesea Mine Rehabilitation and Closure Plan?

- No not really
- Interested in the long-term use of the site  
intensity to understand the cross-section of the soil

# Alcoa Anglesea Open House Sessions

## Community and Stakeholder Feedback Questionnaire

Has this session helped you to better understand the Anglesea Mine Rehabilitation and Closure Plan?

Yes     No

Has this session informed you about what viable options there are to fill the mine pit?

Yes     No

Is there any additional information you'd like to learn about the potential strategy to fill the mine pit, or in regards to the Anglesea Mine Rehabilitation and Closure Plan?

-----  
- 1970 book - Plans for after the site closed - potential  
water park.  
-----  
-----  
-----  
-----  
-----  
-----  
-----  
-----  
-----  
-----  
-----



50

# Alcoa Anglesea Open House Sessions

## Community and Stakeholder Feedback Questionnaire

Has this session helped you to better understand the Anglesea Mine Rehabilitation and Closure Plan?

Yes  No

Has this session informed you about what viable options there are to fill the mine pit?

Yes  No

Is there any additional information you'd like to learn about the potential strategy to fill the mine pit, or in regards to the Anglesea Mine Rehabilitation and Closure Plan?

"Graphs were too technical, graphs need to be better explained" ← also labelled

"Would like to see ~~it~~ more progression & plans moving forward"

note: seemed hesitant about plans

# Alcoa Anglesea Open House Sessions

## Community and Stakeholder Feedback Questionnaire

Has this session helped you to better understand the Anglesea Mine Rehabilitation and Closure Plan?

Yes     No

Has this session informed you about what viable options there are to fill the mine pit?

Yes     No

Is there any additional information you'd like to learn about the potential strategy to fill the mine pit, or in regards to the Anglesea Mine Rehabilitation and Closure Plan?

- Well presented
- for someone that doesn't understand water it was
- No well presented and helpful people around.

# Alcoa Anglesea Open House Sessions

## Community and Stakeholder Feedback Questionnaire

Has this session helped you to better understand the Anglesea Mine Rehabilitation and Closure Plan?

Yes  No

Has this session informed you about what viable options there are to fill the mine pit?

Yes  No

Is there any additional information you'd like to learn about the potential strategy to fill the mine pit, or in regards to the Anglesea Mine Rehabilitation and Closure Plan?

"Terrific session"

"Concerned about using good water that we can't use during something like a drought"

"Water is a precious commodity"

"I'm not anti-Alcoa, but it doesn't change my mind that the long way is the best way, I don't care if it takes 50 years."

# Alcoa Anglesea Open House Sessions

## Community and Stakeholder Feedback Questionnaire

Has this session helped you to better understand the Anglesea Mine Rehabilitation and Closure Plan?

Yes     No    "a little bit"

Has this session informed you about what viable options there are to fill the mine pit?

Yes     No

Is there any additional information you'd like to learn about the potential strategy to fill the mine pit, or in regards to the Anglesea Mine Rehabilitation and Closure Plan?

"Where is Torquay's storm water going to go"

"Would be good to do tours & have a better understanding, <sup>mine</sup>informative"

"get the kids involved & teach them about aquifer" <sup>educational</sup>



# Alcoa Anglesea Open House Sessions

## Community and Stakeholder Feedback Questionnaire

Has this session helped you to better understand the Anglesea Mine Rehabilitation and Closure Plan?

Yes  No *already informed*

Has this session informed you about what viable options there are to fill the mine pit?

Yes  No *would like to see more recent modelling*

Is there any additional information you'd like to learn about the potential strategy to fill the mine pit, or in regards to the Anglesea Mine Rehabilitation and Closure Plan?

*Feels like a lot of people have other plans of their mind, e.g. cost of living, accommodation, climate change*

*"damage is done, I'm only here because I care about the river"*

*"concentrated sulphur fall-out in the mine"*

*\*Feels there has been a lack of responsibility on behalf of many parties, including government*

# Alcoa Anglesea Open House Sessions

## Community and Stakeholder Feedback Questionnaire

Has this session helped you to better understand the Anglesea Mine Rehabilitation and Closure Plan?

Yes  No

Has this session informed you about what viable options there are to fill the mine pit?

Yes  No

Is there any additional information you'd like to learn about the potential strategy to fill the mine pit, or in regards to the Anglesea Mine Rehabilitation and Closure Plan?

Came for friends of Anglesea, local, came out of interest

"wants to understand the view a bit better"



# Alcoa Anglesea Open House Sessions

## Community and Stakeholder Feedback Questionnaire

Has this session helped you to better understand the Anglesea Mine Rehabilitation and Closure Plan?

Yes     No

Has this session informed you about what viable options there are to fill the mine pit?

Yes     No

Is there any additional information you'd like to learn about the potential strategy to fill the mine pit, or in regards to the Anglesea Mine Rehabilitation and Closure Plan?

- Love maps - so interesting to see the ~~5001~~ +

- Questions were answered well

# Alcoa Anglesea Open House Sessions

## Community and Stakeholder Feedback Questionnaire

Has this session helped you to better understand the Anglesea Mine Rehabilitation and Closure Plan?

Yes  No

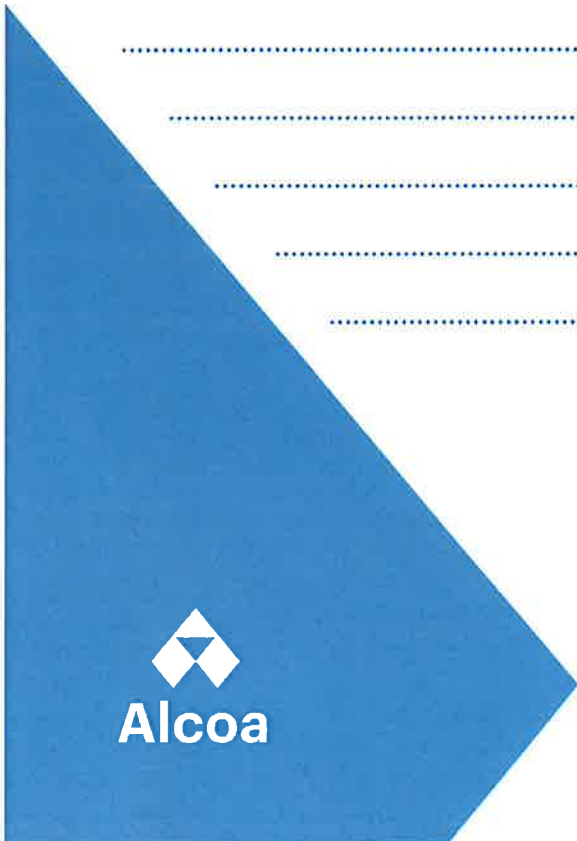
Has this session informed you about what viable options there are to fill the mine pit?

Yes  No

Is there any additional information you'd like to learn about the potential strategy to fill the mine pit, or in regards to the Anglesea Mine Rehabilitation and Closure Plan?

- Feel not well equipped to understand. I think I'm too stupid to understand.  
- Why not just let it fill naturally

.....  
.....  
.....  
.....  
.....  
.....  
.....  
.....  
.....  
.....



# Alcoa Anglesea Open House Sessions

## Community and Stakeholder Feedback Questionnaire

Has this session helped you to better understand the Anglesea Mine Rehabilitation and Closure Plan?

Yes  No

Has this session informed you about what viable options there are to fill the mine pit?

Yes  No

Is there any additional information you'd like to learn about the potential strategy to fill the mine pit, or in regards to the Anglesea Mine Rehabilitation and Closure Plan?

"Thinks session is good - important to engage  
the community"

"Fantastic to have the team that actually works  
on the project here - especially Chris"

↳ for technical details  
wants to do a tour, overall supportive

...



Alcoa

# Alcoa Anglesea Open House Sessions

## Community and Stakeholder Feedback Questionnaire

Has this session helped you to better understand the Anglesea Mine Rehabilitation and Closure Plan?

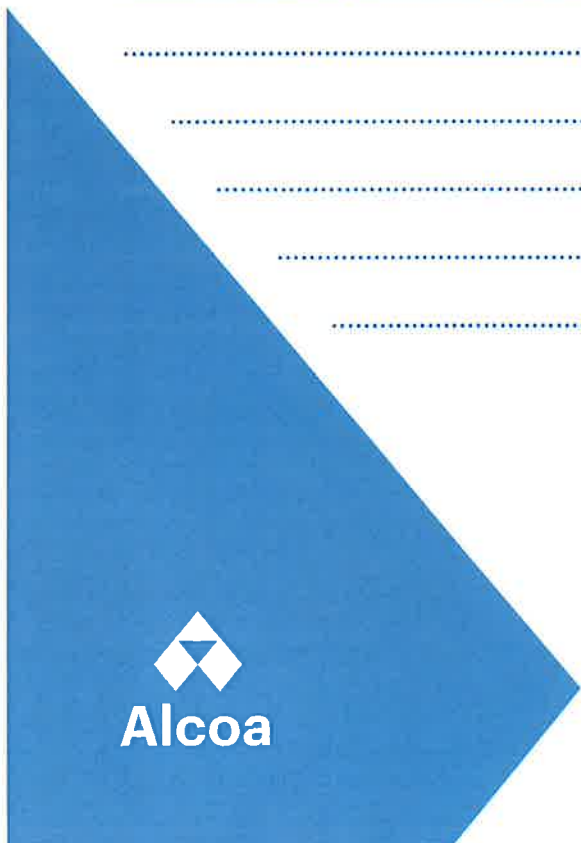
Yes     No    *already knowledgale*

Has this session informed you about what viable options there are to fill the mine pit?

Yes     No    *but feels better understanding now*

Is there any additional information you'd like to learn about the potential strategy to fill the mine pit, or in regards to the Anglesea Mine Rehabilitation and Closure Plan?

*"The session has fulfilled its brief"*  
*"feels that many community members struggle to have opinions on issues impacting locals"*



# Alcoa Anglesea Open House Sessions

## Community and Stakeholder Feedback Questionnaire

Has this session helped you to better understand the Anglesea Mine Rehabilitation and Closure Plan?

Yes     No

Has this session informed you about what viable options there are to fill the mine pit?

Yes     No

Is there any additional information you'd like to learn about the potential strategy to fill the mine pit, or in regards to the Anglesea Mine Rehabilitation and Closure Plan?

.....  
- Information about the soil remediation.  
.....  
.....  
.....  
.....  
.....  
.....  
.....  
.....  
.....



Alcoa

# Alcoa Anglesea Open House Session

## Community and Stakeholder Feedback C

Has this session helped you to better understand the Anglesea Mine Closure Plan?

- Yes     No

Has this session informed you about what viable options there are for the mine pit?

- Yes     No

Is there any additional information you'd like to learn about the potential mine pit, or in regards to the Anglesea Mine Rehabilitation and Closure Plan?

- Nothing else - was interested in the overall plan.

-

-

-

-

-





# Alcoa Anglesea Open House Session

Community and Stakeholder Feedback C

Has this session helped you to better understand the Anglesea Mine Closure Plan?

Yes  No

Has this session informed you about what viable options there are?

Yes  No

Is there any additional information you'd like to learn about the potential mine pit, or in regards to the Anglesea Mine Rehabilitation and Closure?

"There is a lot to digest, lots of good information"

"not convinced about aquifer, but appreciates being able to talk about options with team"



# Alcoa Anglesea Open House Sessions

## Community and Stakeholder Feedback Questionnaire

Has this session helped you to better understand the Anglesea Mine Rehabilitation and Closure Plan?

Yes  No ?

Has this session informed you about what viable options there are to fill the mine pit?

Yes  No

Is there any additional information you'd like to learn about the potential strategy to fill the mine pit, or in regards to the Anglesea Mine Rehabilitation and Closure Plan?

- ① The presentation of information was very complex and difficult to understand, even as an experienced scientist, so probably quite inaccessible to a lay person.
- ② The hydrogeologist hired by Alcoa is pushing the climate change argument for the state of the river which is unsubstantiated.
- ③ Warren Sharpe stated that there was no engineering advantage in rapidly filling the mine void, so on this basis should be left, rather than further depleting the aquifer.



Alcoa

# Alcoa Anglesea Open House Sessions

## Community and Stakeholder Feedback Questionnaire

Has this session helped you to better understand the Anglesea Mine Rehabilitation and Closure Plan?

- Yes
- No
- A little bit

Has this session informed you about what viable options there are to fill the mine pit?

- Yes
- No

Is there any additional information you'd like to learn about the potential strategy to fill the mine pit, or in regards to the Anglesea Mine Rehabilitation and Closure Plan?

The information provided was relatively complex and would require further examination to fully understand Alcoa's Arguments - too much information - too little time. I am most concerned that Alcoa is suggesting that climate change is the major driver of reduced flows and acidity in the Anglesea River, without considering the impact of the mine void and concave depression on the river.

Our major concern as residents is that pumping may lead to further depletion of the overlying river catchment.

There is certainly no benefit to the river and catchment by Alcoa pumping water from the UFA. The argument that rapid filling of the void will be of environmental value to the area is spurious, as it will not provide any ecological benefits at all.

Walter Warren Sharp also ~~has~~ indicated that rapid filling of the void is not necessary from an engineering perspective as the walls are stable.

I feel that it is environmentally irresponsible of Alcoa to resume pumping from the UFA rather than allowing the aquifer to replenish and reach its natural levels.

I see no point in pumping to fill an unnatural, toxic, acidic ditch.





## **Alcoa Anglesea**

205 Coalmine Road, Anglesea VIC 3230  
[angleseaps@alcoa.com.au](mailto:angleseaps@alcoa.com.au)  
[www.alcoa.com/australia/anglesea](http://www.alcoa.com/australia/anglesea)